



3E Basor
CABLE TRAY SPECIALIST

Hyper
Scale
Proven
Solutions!

 **DATA
CENTER**

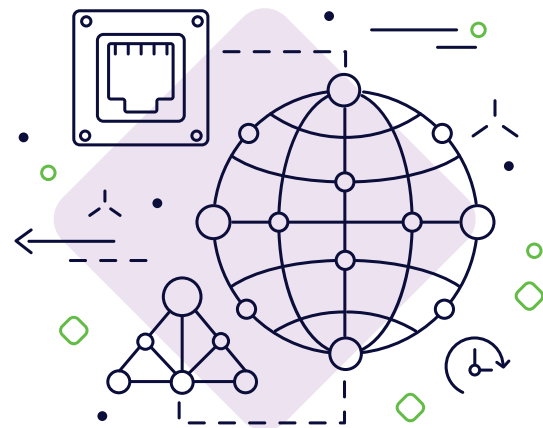
Different works, different solutions.

Basor Electric provides an innovative design, high durability and excellent quality to all products in the **data center** market. Our reputation for technical excellence is rooted in our long-established ability to solve many of the industry's technical challenges. We apply all our expertise working closely with our clients to offer them the best solution and the shortest delivery time

Index

- Technical addendum ■ 4
- Wire basket trays & fittings ■ 8
- Cable ladders ■ 20
- Special solutions ■ 30
- Our experience ■ 32

Global Network



Cloud computing



Dashboard



Data base



Future-ready cable management in data centers

INTRODUCTION

New trends in cloud information services are rapidly changing the design of data centers. The use of fiber optic cables, higher server densities, and new cabling practices require open, modular solutions for flexible design of data center facilities. BASOR solutions make it possible to always adapt data centers to new technologies.

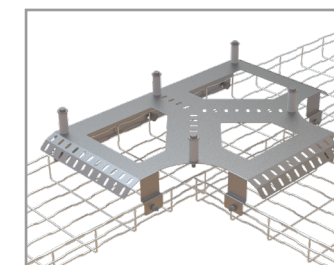
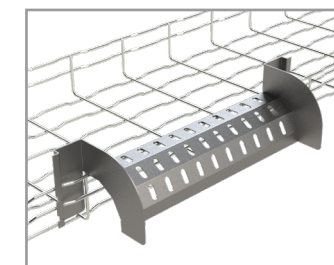
In modern data centers, the provision of IT infrastructure is typically done on two levels. From the top the data cables are laid and from a lower level the power supply is ensured. This ensures that complex structures are seamlessly connected without disturbances. Our systems are designed around these requirements.

FIBER-FRIENDLY CABLE TRAYS & ACCESSORIES

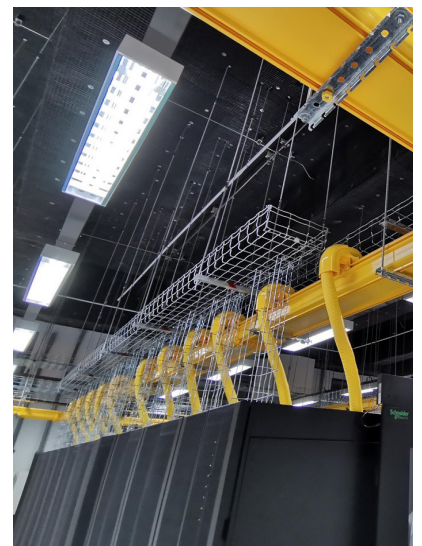
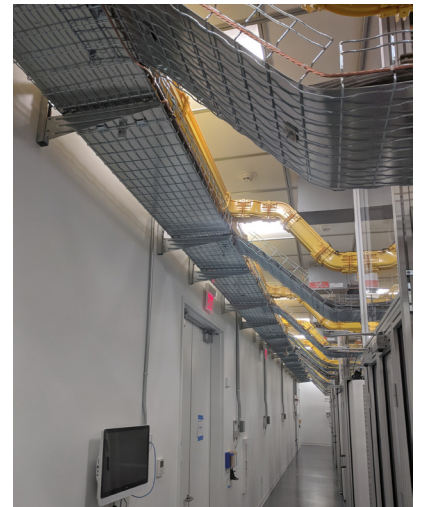
The share of fiber optic cables in all fields of information technology and telecommunications is increasing rapidly. Due to the high sensitivity of these cables, the fiber optic cabling system requires smooth cable runs for uninterrupted and reliable signal quality. BASOR product series for data centers are specially designed for the installation of fiber optic cables. The priority of this extremely flexible system is that the cable laying is carried out with the utmost care, observing the allowable bending radius.

The system dimensions are optimally matched and allow data center cable routing systems to function regardless of the number of cables:

- Quick installation of accessories without nuts and bolts.
- Cable outlets can be retrofitted without cutting and maintaining wide radius bends.



The range includes specialized accessories suitable for fiber optic cabling installations, including rounded corners; cable drops; range of preformed pieces for horizontal and vertical changes of direction with an optimal design of bending radius of fiber optic cables; bottom liners and custom powder coated pathways.



Technical addendum

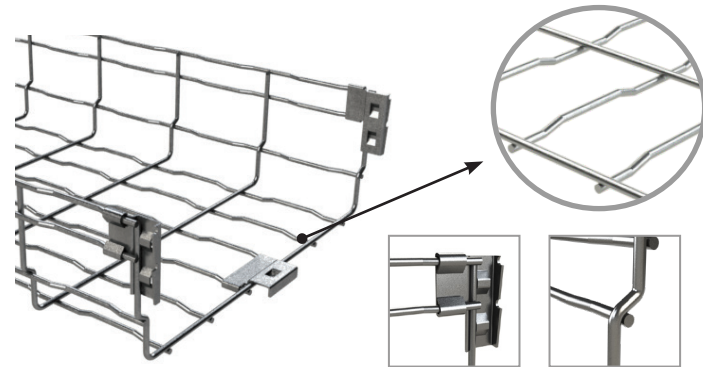
Security in the data storage industry is critical. These are facilities that are always classified as mission critical, where continuity of service prevails over other considerations. Any risk may affect the information stored and the corporate image.

Self splicing waved wire cable tray

Worldwide patented system



These cable trays are installed around the world in more than 40 countries and we have installed **9 Million FT in the last 7 years.**



In addition to the wave wire design patent, Basor has other patents as the Basorfil Bolt-nut set that reduces the quantity of parts from 3 to 2, the self-splicing BF2R basket tray system that reduces the assembly of two sections to only 4 seconds or the stackable (nesting design) basket tray which was designed with the distributors and their warehousing and distribution costs in mind.

(19) (11) **EP 1 387 455 B1**

(12) **PATENT SPECIFICATION**

(45) Date of publication and mention of the grant of the patent: 04.07.2007 Bulletin 2007/27 (51) Int. Cl.: H02G 3/04 (2006.01)

(21) Application number: 03380173.9 (22) Date of filing: 14.07.2003

(54) Grid tray for electrical conductors and method for forming grid trays
Gitterboden für elektrische Leiter und Verfahren zum Herstellen von Gitterböden
Plateau en grille pour conducteurs électriques et méthode pour former des plateaux en grille

(84) Designated Contracting States: AT BE BG CH CY CZ DE DK EE ES FI FR GB GR HU IE IT LI LU MC NL PT RO SE SI SK TR (72) Inventor: Banula Femenia, Vicente 46700 Gandia (ES)

(30) Priority: 31.07.2002 ES 200201809 (74) Representative: Sanz-Bernell Martínez, Alejandro C/Alfalfa, 4 46002 Valencia (ES)

(43) Date of publication of application: 04.02.2004 Bulletin 2004/06 (56) References cited: EP-A1-1 206 020

(73) Proprietor: Basor Electric S.A. 46700 Gandia (ES)

Basor® Waved Wire Cable Tray System is a Worldwide Patented Design, which increases the safe working loads a 30% more than other straight wire cable trays.

Only Basor Electric S.A can produce this model thanks to our Worldwide Patent **(EP1387455B1)** in a clear commitment to develop the most easiest and fastest products to install.

Comfortable work for the users

Basor does not sell pounds of steel, Basor sells a products designed specifically to manage cables. We design our cable trays taking into consideration the maximum quantity of cables that can physically fit into a cable tray. The concept is easy, you are not going to design a cable management system to manage the weight of an elephant so, why would you design your cable tray to manage that amount of weight?

Basor optimizes our cable tray design to manage cables and cables alone. This is reflective of the international standards and is the common sense approach. Because of this pragmatic approach we have designed our Basorfil cable tray to manage the cables that can physically fit inside the trays, increasing the wire diameters only as the size of the tray volumes increase for the greatest optimization of materials used.

The optimal design according to cable capacity and a patented reinforcement system have a significant advantage for the user:

A contractor typically installs over 500 pieces of tray per job and will appreciate a lower weight that eases installation.

There is less fatigue and more footage of tray installation will be achieved.



BF2R allows faster installation without tools

BF2R basket tray is the **fastest and easiest tray** to install in the market today. This design means that there is no need for additional clamps or fittings needed will maintaining a 100% guaranteed electrical continuity on every installation. The benefit to the installer is a great savings in time and labor costs.

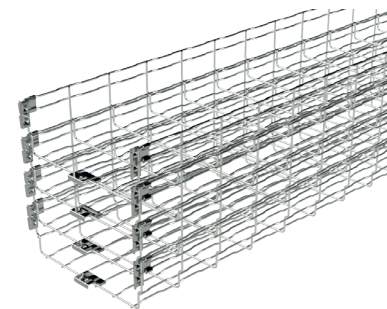
Other straight wire systems that you can find in the market require wires with greater diameter and weight than Basor's in order to meet the safe working loads that managing cables require. This makes it impossible for other systems to offer a **self-splicing system** with any savings advantage to the installer.

The Basor waved wire cable tray system can be **installed by only one person**. Other systems require a team of two or more which is a waste of time and labor.



Stackable system

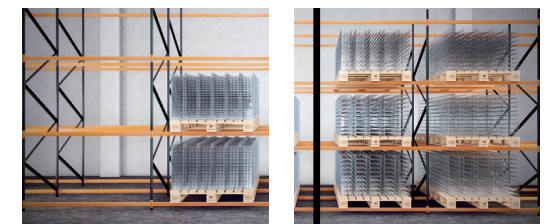
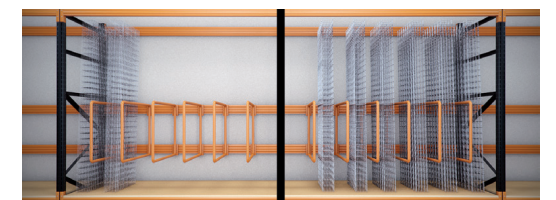
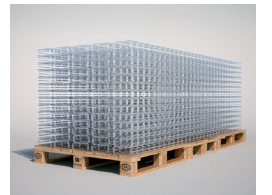
- *Reduce space = Reduce warehouse cost
- *Reduce transport = Reduce transport cost
- *Increase strength



ENERGY³ E-BFR



STANDARD



CO₂ environmental responsible

Apart from **ISO 14001**, our aim is to continually improve environmental protection in our company. We are striving to gradually reduce our consumption of resources and energy and to minimize our emissions and waste in such a way that we make our contribution to environmentally sustainable development.

We take account of environmental impact in our investment and purchasing policy. Wherever possible we aim to give preference to the most environmentally friendly options.

Suppliers and contractual partners are also included in our efforts to improve our environmental performance. Consult our LEED Materials Declaration Form.



Environmentally friendly

Minimize our emissions

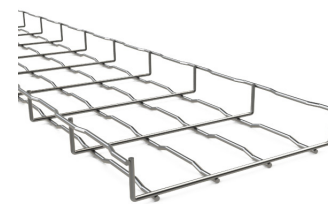
LEED credits

Wire basket trays & fittings

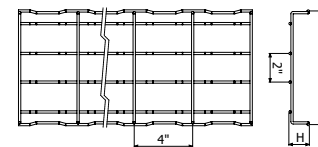
Basorfil is the ideal product for supporting cable in the rapidly changing voice/data/video market. Crowded spaces and changing technologies in data centers, data closets, tenant areas, data backbones make Basorfil the ideal cable management solution. Turns, Tee's, rises and drops all can be quickly made on site to meet your specific project needs. Basorfil manages UTP cables, fiber optics, video, alarm and power cables anywhere they are needed.



BFR H1-1/2"



L = 10 FT

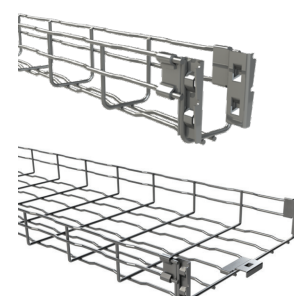


	Width	SWL	Weight	FINISH
	inch	(Lbs./ft)d=5ft	LBS/EA	REF. EZ
BFR 4"× 1-1/2"	4"	15	3.37	2/3616
BFR 6"× 1-1/2"	6"	15	4.56	2/3617
BFR 8"× 1-1/2"	8"	15	5.49	2/3618
BFR 12"× 1-1/2"	12"	19	7.80	2/3619

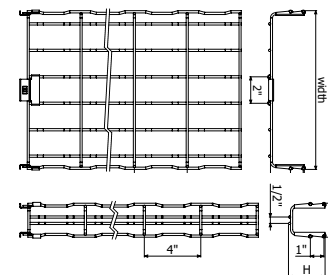
🔧 2x 🛠️ 2/4364 EZ



BF2R H2"



L = 10 FT



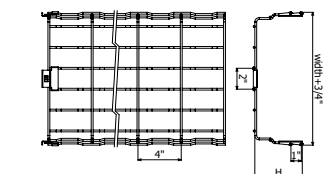
	Width	SWL	Centerpiece	UTP CAT 6	Weight	FINISH		
	inch	(Lbs./ft)d=5ft	units	(0.24')	LBS/EA	REF. EZ	REF. Black	REF. White
BF2R 2"×2"	2"	8	0	-	4.93	2/7389	U/0299	U/0600
BF2R 4"×2"	4"	19	0	74	5.22	2/7248	U/0300	U/0601
BF2R 6"×2"	6"	21	0	124	5.56	2/7249	U/0301	U/0602
BF2R 8"×2"	8"	32	1	171	7.21	2/7250	U/0302	U/0603
BF2R 12"×2"	12"	38	1	267	10.45	2/7251	U/0303	U/0604
BF2R 16"×2"	16"	37	1	364	13.29	2/7394	U/0304	U/0605
BF2R 18"×2"	18"	43	2	410	16.53	2/9989	U/0305	U/0606
BF2R 20"×2"	20"	43	2	459	17.66	2/7395	U/0306	U/0607
BF2R 24"×2"	24"	43	2	555	20.70	2/7396	U/0307	U/0608



BF2R H4"



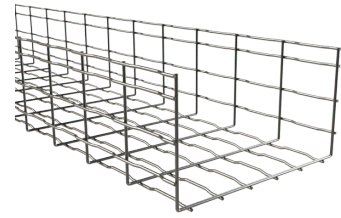
L = 10 FT



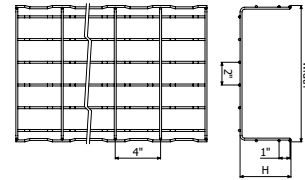
	Width	SWL	Centerpiece	UTP CAT 6	Weight	FINISH		
	inch	(Lbs./ft)d=5ft	units	(0.24')	LBS/EA	REF. EZ	REF. Black	REF. White
BF2R 4"×4"	4	32	0	139	7.21	2/7914	U/0308	U/0609
BF2R 6"×4"	6	32	0	229	7.54	2/7915	U/0309	U/0610
BF2R 8"×4"	8"	48	1	318	10.52	2/7397	U/0310	U/0611
BF2R 12"×4"	12"	51	1	498	13.29	2/7398	U/0311	U/0612
BF2R 16"×4"	16"	75	1	679	17.92	2/7399	U/0312	U/0613
BF2R 18"×4"	18"	73	2	768	19.31	2/9990	U/0313	U/0614
BF2R 20"×4"	20"	72	2	859	20.64	2/7400	U/0314	U/0615
BF2R 24"×4"	24"	79	2	1038	23.35	2/7401	U/0315	U/0616



BFR H6"



L = 10 FT

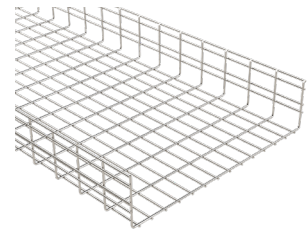


	Width	SWL	UTP CAT 6	Weight	FINISH		
	inch	(Lbs./ft)d=5ft	(0.24')	LBS/EA	REF. EZ	REF. Black	REF. White
BFR 8"x6"	8"	71	490	13.10	2/9549	U/0316	U/0617
BFR 12"x6"	12"	80	754	17.59	2/9550	U/0317	U/0618
BFR 16"x6"	16"	102	1018	20.24	2/9551	U/0318	U/0619
BFR 18"x6"	18"	107	1158	20.90	2/9991	U/0319	U/0620
BFR 20"x6"	20"	112	1281	22.82	2/9552	U/0320	U/0621
BFR 24"x6"	24"	120	1545	24.01	2/9553	U/0321	U/0622

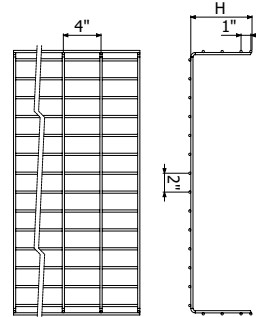
- 8"-12" (200-300mm) 4x 2/4364 EZ
- 16"-24" (200-300mm) 6x 2/4364 EZ



BF



L = 10 FT

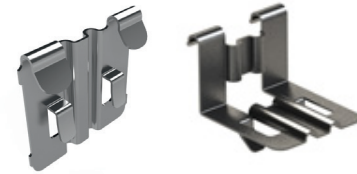


	Width	Weight	FINISH		
	inch	LBS/EA	REF. EZ	REF. Black	REF. White
BF 28"x6"	28	36.24	2/18784		
BF 36"x2"	36	42.92	2/18785	☎	☎
BF 36"x4"	36	42.92	2/18786	☎	☎
BF 36"x6"	36	42.92	2/18787		

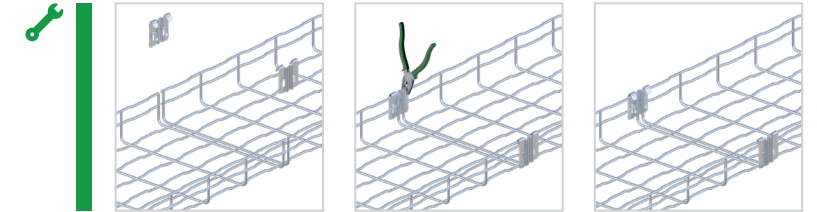
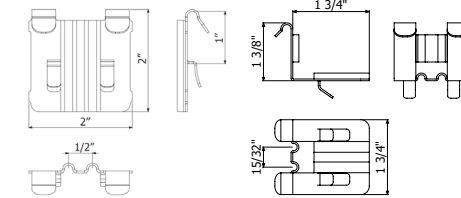
- 6x 2/4364 EZ



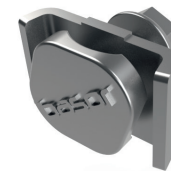
QUICK SPICE



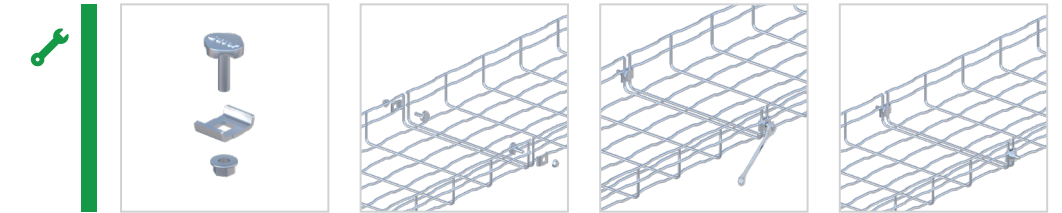
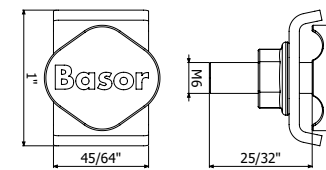
	Weight	FINISH			Weight	FINISH
	LBS/EA	REF. EZ	REF. Black	REF. White	LBS/EA	REF. HDG
UR BFR H2"/4" E-BFR H4"	0.05	2/6217	U/0327	U/0628	0.05	2/6219
UR BFR H1 1/2" E-BFR H2"/4"	0.06	2/7271	U/0328	U/0629	0.06	2/7272



BOLT STAPLE SET



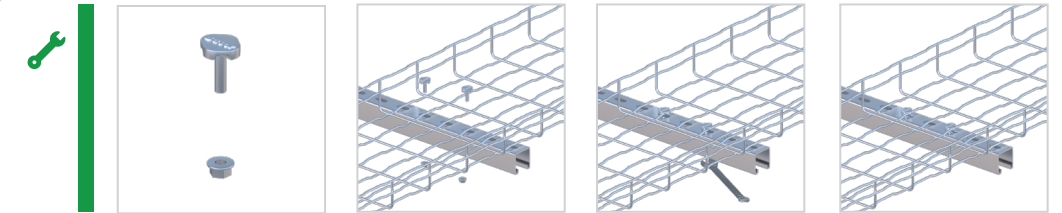
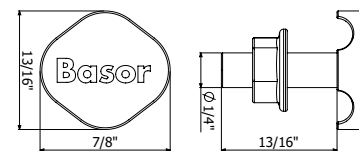
Weight	FINISH			Weight	FINISH	Weight	FINISH	
	LBS/EA	REF. EZ	REF. Black				REF. White	LBS/EA
0.05	2/4364	U/0329	U/0630	0.05	2/4360	0.05	2/4915	2/5358



BF BOLT NUT SET

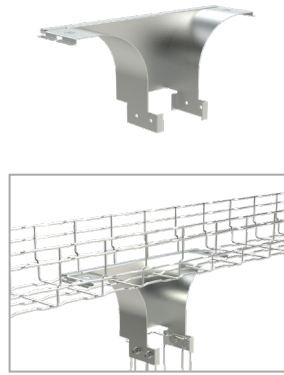


Weight	FINISH			Weight	FINISH	Weight	FINISH	
	LBS/EA	REF. EZ	REF. Black				REF. White	LBS/EA
0.03	2/4362	U/0331	U/0632	0.03	2/7132	0.03	2/4923	2/8229



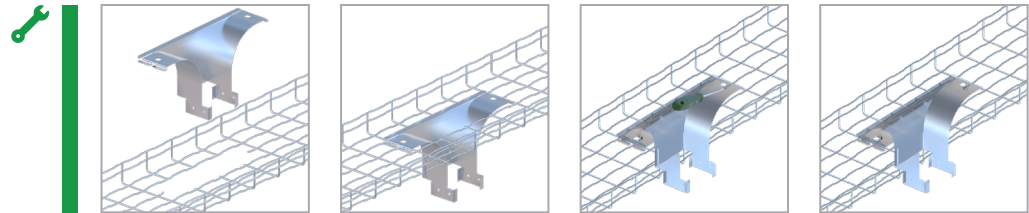
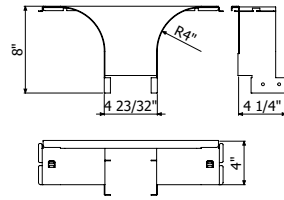
☎ = Upon Request
 *SWL = Safety Working Load

DROP OUT BJCBFR

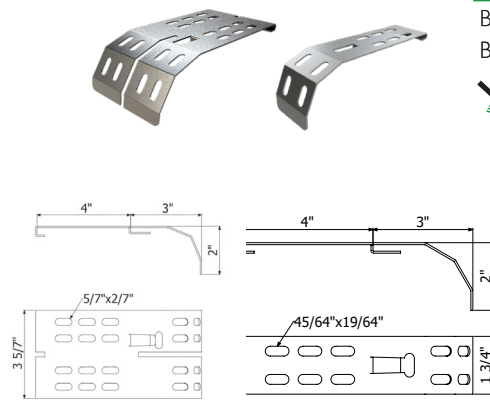


Width	Weight	FINISH
inch	LBS/EA	REF. PG
8"	2.03	2/18813

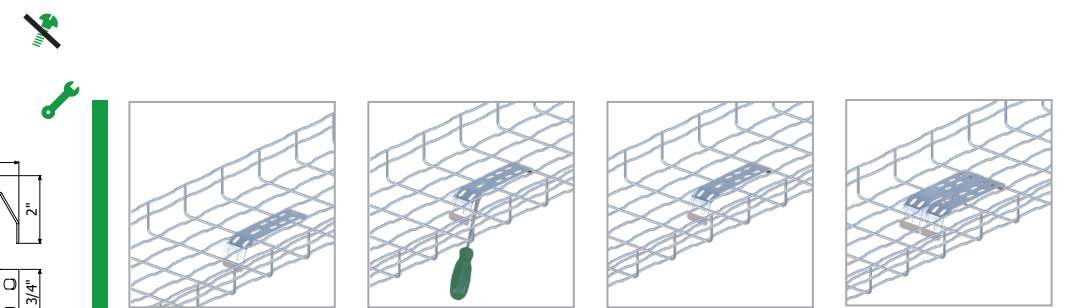
4x 2/4364 EZ



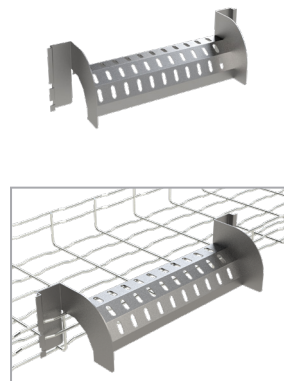
DROP-OUT PLATE



Weight	FINISH		Weight	FINISH
	REF. PG	REF. Block		
0.44	2/6451	U/0338	0.44	2/6452
0.25	2/9807	U/0339	0.22	-

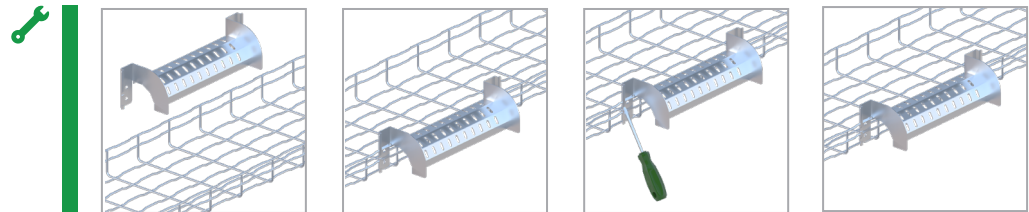
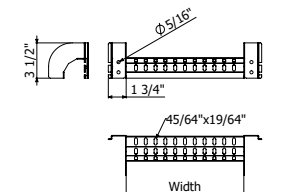


DROP OUT SIDEWAY BJCL

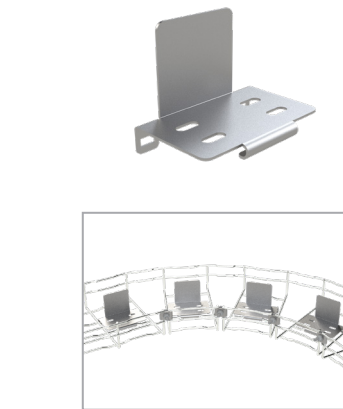


Width	Weight	FINISH
inch	LBS/EA	REF. PG
8"	0.99	2/18777
12"	1.21	2/18778
18"	1.54	2/18779
24"	1.87	2/18780

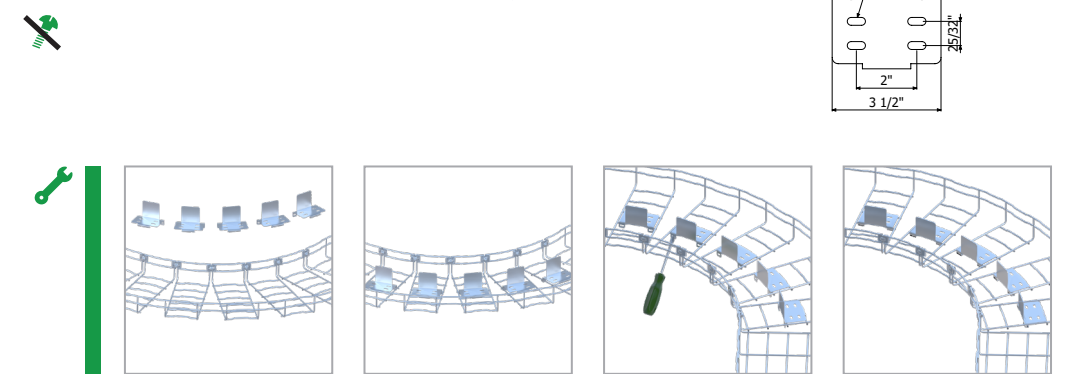
2/4364 EZ



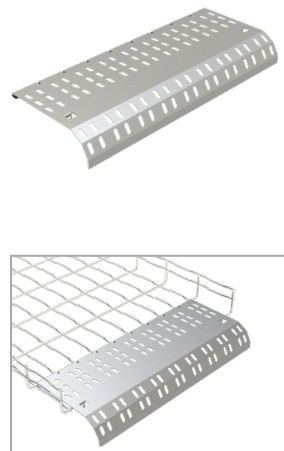
SINGLE DIVIDER SSBFR



Height	Weight	FINISH	
		REF. PG	REF. PG
2"	0.24	2/18781	2/18781
4"	0.29	2/18782	2/18782
6"	0.29	2/18783	2/18783

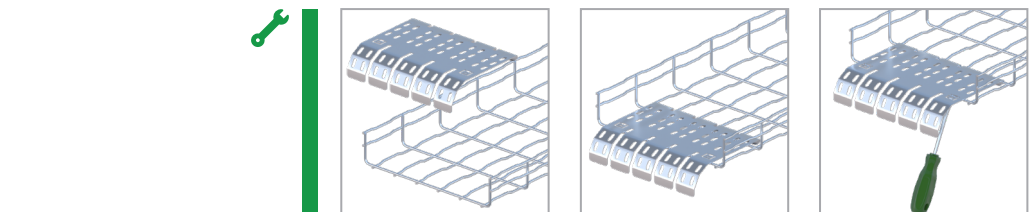
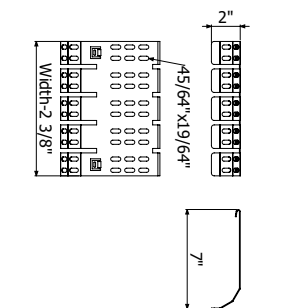


CROSS DROP OUT CDO

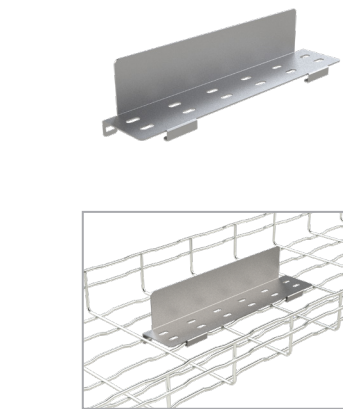


Width	Weight	FINISH
inch	LBS/EA	REF. PG
8"	0.38	9/02508
12"	1.32	9/02509
16"	1.76	9/02510
18"	1.98	9/02511
20"	2.20	9/02512
24"	2.64	9/02513
28"	3.08	9/02514
36"	3.96	9/02515

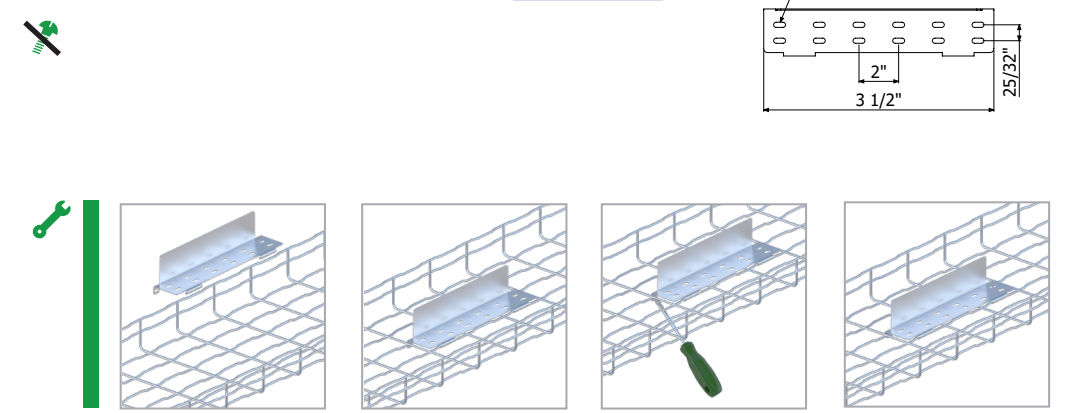
2/4364 EZ



TRIPLE DIVIDERS STBFR

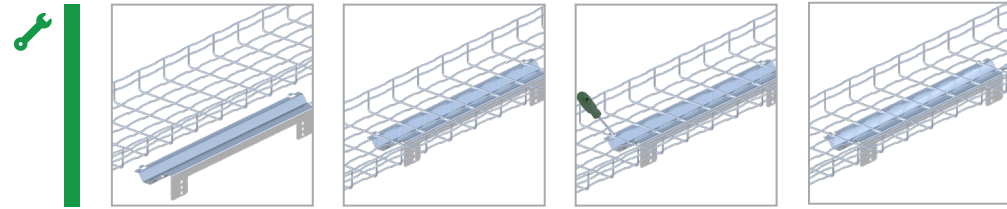
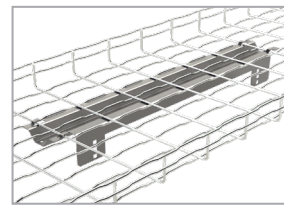
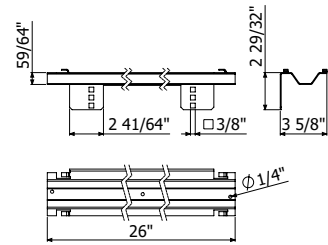


Height	Weight	FINISH	
		REF. PG	REF. PG
2"	0.72	9/02516	9/02516
4"	0.87	9/02517	9/02517
6"	0.87	9/02518	9/02518



1U SWITCH SUPPORT

1U Switch Support	Weight	FINISH
	LBS/EA	REF. PG
	2,85	U/0035



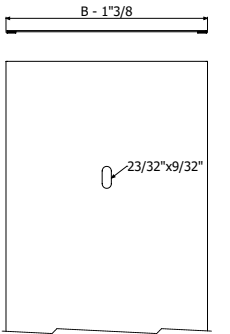
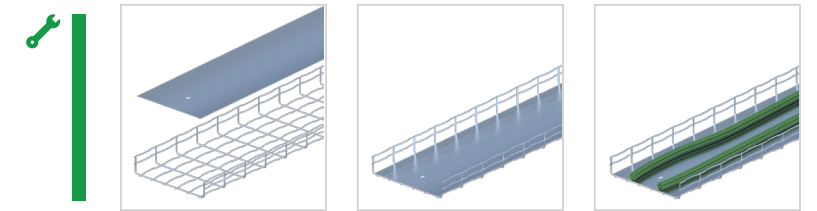
FSBFR



L = 10 FT

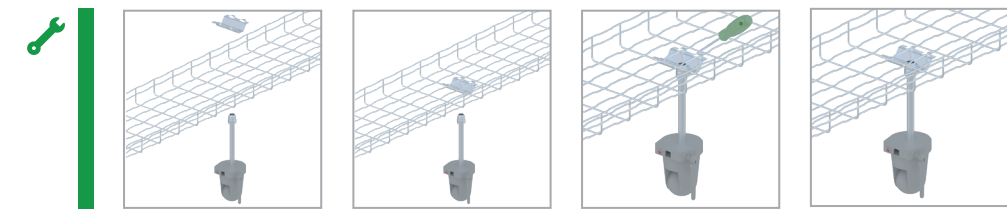
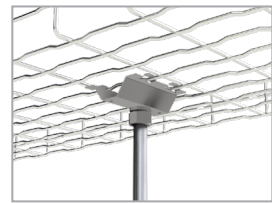
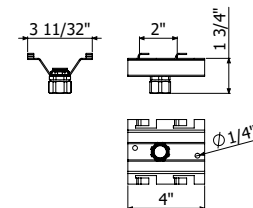
	Width		Weight LBS/EA	FINISH		
	inch	mm		REF. PG	REF. Black	REF. White
FSBFR 4"	4"	100	4.03	2/9658	U/0346	U/0647
FSBFR 6"	6"	150	6.68	2/9659	U/0347	U/0648
FSBFR 8"	8"	200	9.33	2/9660	U/0348	U/0649
FSBFR 12"	12"	300	14.68	2/9661	U/0349	U/0650
FSBFR 16"	16"	400	20.04	2/9662	U/0350	U/0651
FSBFR 18"	18"	450	22.05	U/0007	U/0351	U/0652
FSBFR 20"	20"	500	25.33	2/9663	U/0352	U/0653
FSBFR 24"	24"	600	30.64	2/9664	U/0353	U/0654

1x 2/4356 EZ + 1x 2/0337 EZ



CAMERA SUPPORT

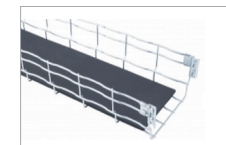
Camera Support	Weight	FINISH
	LBS/EA	REF. PG
	1	U/0036



PVC LINER



L = 10 FT

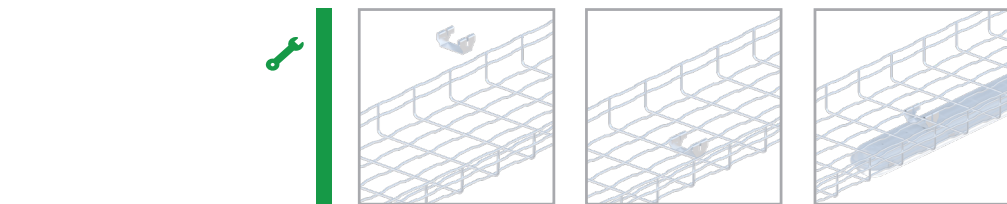
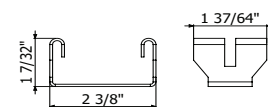


	Width		Length Feet	Weight LBS/EA	FINISH REF. PVC
	inch	mm			
Wider Liner 6"	6"	150	200	21	☎
Wider Liner 12"	12"	300	200	28	
Wider Liner 18"	16"	400	200	46	
Wider Liner 24"	24"	600	200	55	
Wider Liner 6" (Bottom Only)	6"	150	200	7	
Wider Liner 12" (Bottom Only)	12"	300	200	21	
Wider Liner 18" (Bottom Only)	16"	400	200	33	
Wider Liner 20" (Bottom Only)	20"	500	200	37	
Wider Liner 24" (Bottom Only)	24"	600	200	44	

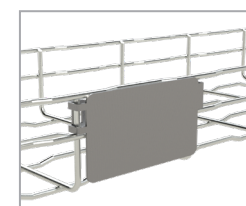
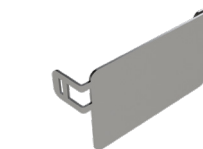
☎ = Upon Request

SUPPORT SFL 30

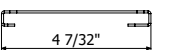
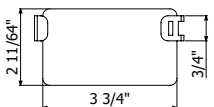
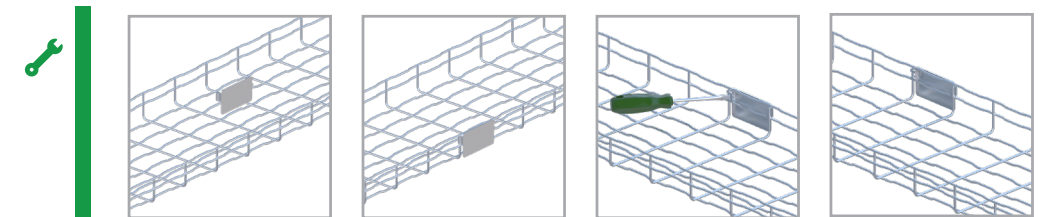
Support SFL 30	Weight	FINISH
	LBS/EA	REF. PG
	0.20	2/18822



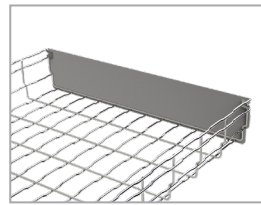
DESIGNATION PLATE DP



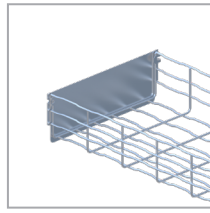
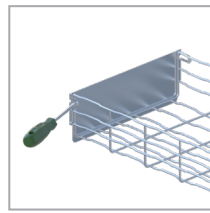
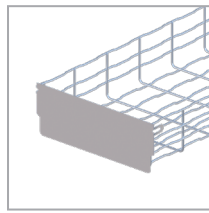
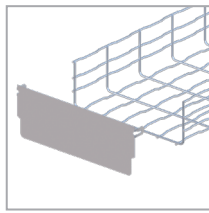
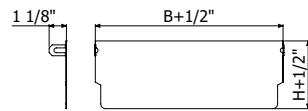
Designation Plate DP	Weight	FINISH
	LBS/EA	REF. PG
	0.20	9/02519



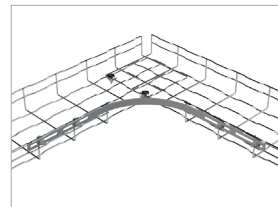
BLIND END PLATE



	Weight	FINISH	
	LBS/EA	REF. PG	
Blind End 4 x 2"	0,142	U/0044	
Blind End 6 x 2"	0,209	U/0043	
Blind End 8 x 2"	0,275	U/0042	
Blind End 12 x 2"	0,409	U/0041	
Blind End 16 x 2"	0,543	U/0040	
Blind End 18 x 2"	0,61	U/0039	
Blind End 20 x 2"	0,677	U/0038	
Blind End 24 x 2"	0,811	U/0037	
Blind End 4 x 4"	0,28	U/0058	
Blind End 6 x 4"	0,41	U/0057	
Blind End 8 x 4"	0,53	U/0056	
Blind End 12 x 4"	0,78	U/0055	
Blind End 16 x 4"	1,03	U/0054	
Blind End 18 x 4"	1,15	U/0053	
Blind End 20 x 4"	1,27	U/0052	
Blind End 24 x 4"	1,52	U/0051	

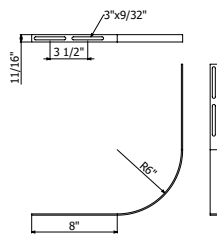
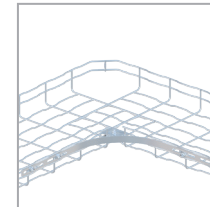
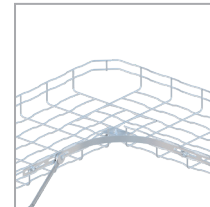
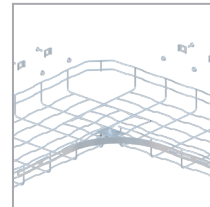
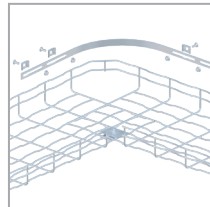


BT 90 KIT

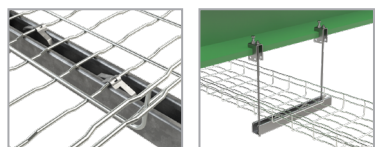


	Weight	FINISH		
	LBS/EA	REF. PG	REF. Black	REF. White
BT 90 Kit	0.62	U/008	U/0398	U/0692

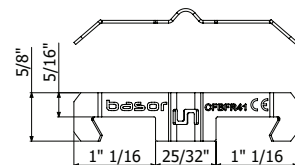
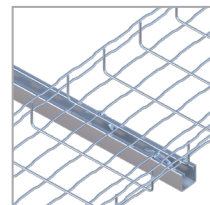
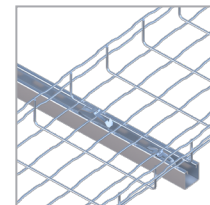
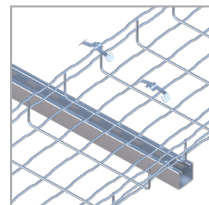
Bolts included



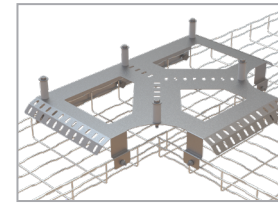
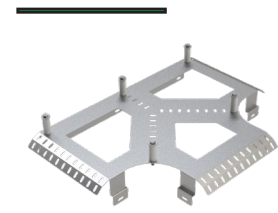
STRUT CONNECTION STRIP



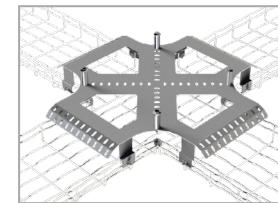
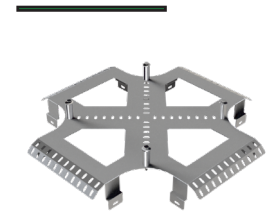
	Weight	FINISH			
	LBS/EA	REF. SS304	REF. Black	REF. White	REF. SS316
CFBFR41	0.02	2/10284	U/1304	U/0699	2/18567



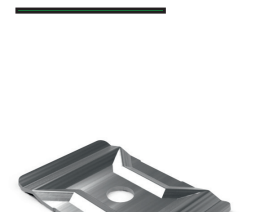
TEE BRIDGE TEPBFR



CROSS BRIDGE CRPBFR



SSC CENTRAL SUSPENSION



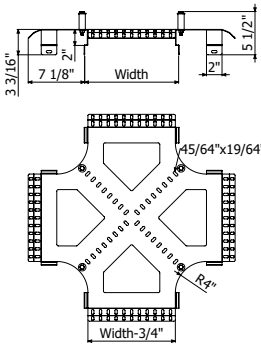
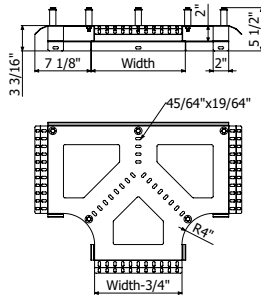
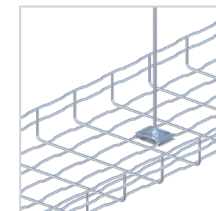
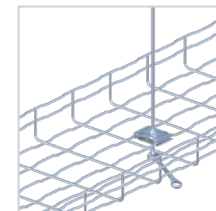
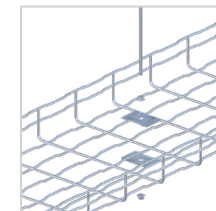
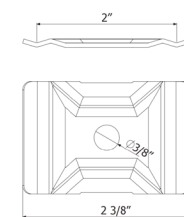
	Width	Weight	FINISH	
	inch	LBS/EA	REF. PG	
Tee bridge TEPBFR 6"x2/6"	6"	4.87	2/18767	
Tee bridge TEPBFR 8"x2/6"	8"	5.29	2/18768	
Tee bridge TEPBFR 12"x2/6"	12"	7.30	2/18769	
Tee bridge TEPBFR 18"x2/6"	18"	9.81	2/18770	
Tee bridge TEPBFR 24"x2/6"	24"	15.44	2/18771	
Tee bridge TEPBFR 28"x6"	28"	17.71	2/18788	
Tee bridge TEPBFR 36"x6"	36"	22.58	2/18789	
Tee bridge TEPBFR 6"x4"	6"	5.34	2/18772	
Tee bridge TEPBFR 8"x4"	8"	5.51	2/18773	
Tee bridge TEPBFR 12"x4"	12"	7.61	2/18774	
Tee bridge TEPBFR 18"x4"	18"	10.12	2/18775	
Tee bridge TEPBFR 24"x4"	24"	15.88	2/18776	

7x 2/4362 EZ

	Width	Weight	FINISH	
	inch	LBS/EA	REF. PG	
Cross Bridge CRPBFR 6"x4"	6"	4.90	223083	
Cross Bridge CRPBFR 8"x4"	8"	5.53	223084	
Cross Bridge CRPBFR 12"x4"	12"	7.34	223085	
Cross Bridge CRPBFR 18"x4"	18"	10.03	223086	
Cross Bridge CRPBFR 24"x4"	24"	15.48	223087	

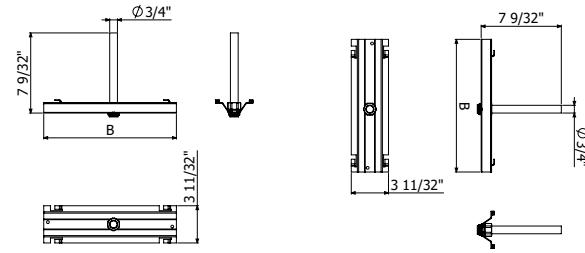
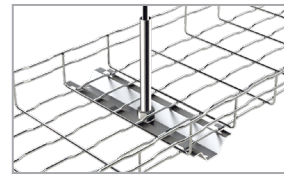
8x 2/4362 EZ

	Weight	FINISH			Weight	FINISH	Weight	FINISH	
	LBS/EA	REF. EZ	REF. Black	REF. White	LBS/EA	REF. HDG	LBS/EA	REF. SS304	REF. SS316
SSC	0.06	2/2064	U/0333	U/0634	0.06	2/0363	0.06	2/0373	2/18553



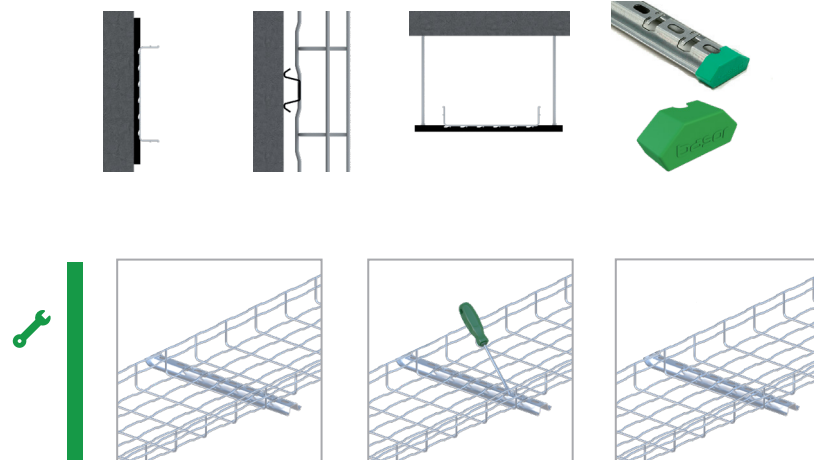
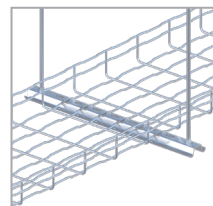
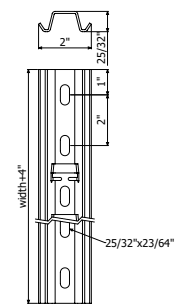
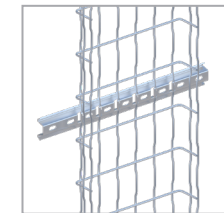
CENTER HANGER

	Length		Weight LBS/EA	FINISH		
	inch			REF. PG	REF. Black	REF. White
Center Hanger Support 4"/6"/8"	4"/6"/8"		1.5	U/0029	U/1309	U/0695
Center Hanger Support 12"/16"	12"/16"		2	U/0030	U/1310	U/0696
Center Hanger 18" Support	18"		2.5	U/0031	U/1311	U/0697
Center Hanger 20"/24" Support	24"		2.5	U/0032	U/1312	U/0698



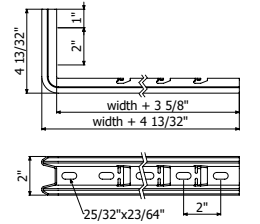
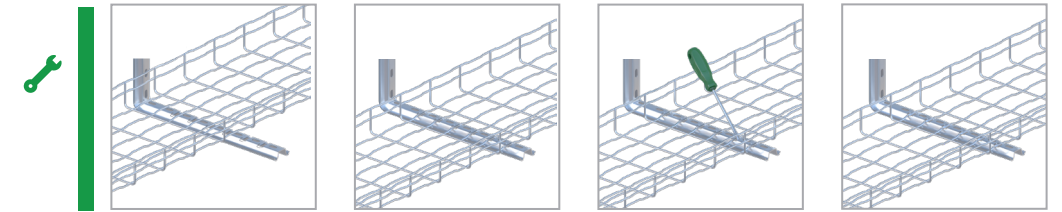
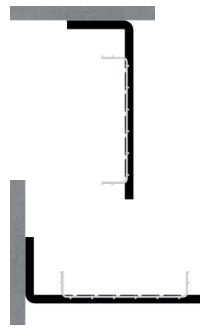
C-SVO SUPPORT PROFILE

	Width		SWL		Weight LBS/EA	FINISH			FINISH		
	inch	mm	Lbs	Kg		REF. PG	LBS/EA	REF. HDG	LBS/EA	REF. SS304	REF. SS316
C-SVO 4"	4"	100	552	250	0.53	2/3630	0.57	2/6280	0.57	2/6285	2/18421
C-SVO 6"	6"	150	441	200	0.68	2/1073	0.71	2/1078	0.71	2/1087	2/18422
C-SVO 8"	8"	200	649	294	0.82	2/1074	0.86	2/1079	0.86	2/1088	2/18423
C-SVO 12"	12"	300	519	235	0.95	2/1076	0.99	2/1081	0.99	2/1090	2/18424
C-SVO 16"	16"	400	355	161	1.20	2/3629	1.29	2/5719	1.29	2/6286	2/18425
C-SVO 18"	18"	450	355	115	1.32	2/1075	-	-	-	-	-
C-SVO 20"	20"	500	254	115	1.46	2/1077	1.57	2/1082	1.57	2/6287	2/18426
C-SVO 24"	24"	600	192	87	1.72	2/5941	1.83	2/5720	-	2/6288	2/18427
C-SVO 10FT	-	-	-	-	7.54	2/1101	8.00	2/7436	-	-	-



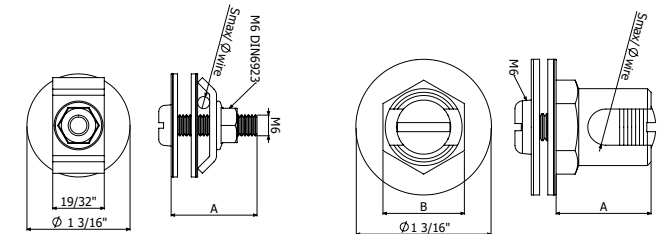
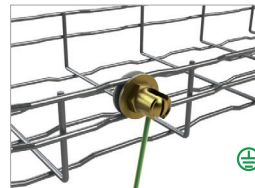
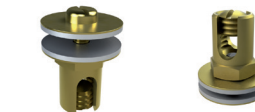
L BRACKET WALL

	Width		SWL		Weight LBS/EA	FINISH			FINISH		
	inch		Lbs	Kg		REF. PG	LBS/EA	REF. HDG	LBS/EA	REF. SS304	REF. SS316
C-SHO 4"	4"		231	105	0.57	2/7230	0.57	2/7239	0.57	2/7490	2/17824
C-SHO 6"	6"		220	100	0.88	2/7231	0.88	2/7240	0.88	2/7491	2/18415
C-SHO 8"	8"		178	81	0.99	2/7232	0.99	2/7241	0.99	2/7492	2/17825
C-SHO 12"	12"		99	45	1.21	2/7233	1.21	2/7242	1.21	2/7493	2/17826
SHO/SHOT pc					0.07	2/6240	0.07	2/6318	0.07	-	2/18479



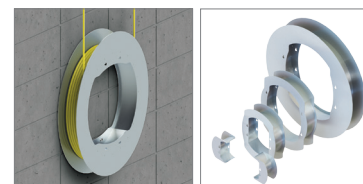
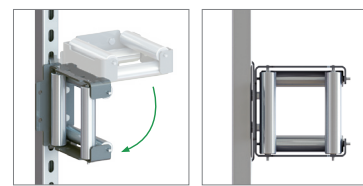
GROUNDING LUG

	AWG	Smax		Weight LBS/EA	LTN REF. LTN
		AWG	mm ²		
GROUNDING TT 35 M6x0.47" (AWG 11 to AWG2)	2	2	35	0.09	2/6796
GROUNDING TT 95 M6x0.47" (AWG 2 to AWG000)	8	000	95	0.17	2/6797
GROUNDING TTL 10-35 (AWG 7 to AWG2)	2	2	35	0.06	2/8189



CABLE PULLING ROLLER SYSTEM & LOOP SPOOLS

	HEIGHT	WIDTH	OPENING	RADIUS	AL
					REF.
Basor Roller	8"	8"	4"X4"	0,7"	
Basor 6 Guide	8"	5"	-	6"	☎
Basor 12 Guide	8"	5"	-	12"	☎



	OD	WIDTH	AL
			REF.
Basor Spool 5620	56"	8"	
Basor Spool 3714	37"	6"	☎
Basor Spool 2810	28"	6"	☎
Basor Spool 1805	18"	6"	☎

☎ = Upon Request



Cable ladders

Telecommunication runway is an important component in a well-planned network. Basor Cable Ladder Runway is designed to support telecommunication or power cables in equipment rooms and pathways that connect to and support telecommunication racks or cabinets. A wide selection of supports and accessories give every installation a professional look.

UNIVERSAL LADDER RACK



	WIDTH		DEPTH		LENGTH		Weight LBS/EA	FINISH REF. BLACK
	inch	mm	inch	mm	ft	mm		
BIRU VIR 6 BL	6"	152	1.5"	38	10"	3048	19	8/0001
BIRU VIR 12 BL	12"	304	1.5"	38	10"	3048	24	8/0002
BIRU VIR 18 BL	18"	457	1.5"	38	10"	3048	29	8/0003
BIRU VIR 24 BL	24"	609	1.5"	38	10"	3048	34	8/0004
BIRU VIR 36 BL	36"	914	1.5"	38	10"	3048	44	8/0029

VERTICAL INSIDE



	WIDTH		DEPTH		Weight LBS/EA	FINISH REF. BLACK
	inch	mm	inch	mm		
BIRU 6 × 1.5 BL	6"	152	1.5"	38	4	8/0054
BIRU 12 × 1.5 BL	12"	304	1.5"	38	5	8/0005
BIRU 18 × 1.5 BL	18"	457	1.5"	38	6	8/0006
BIRU 24 × 1.5 BL	24"	609	1.5"	38	7	8/0007
BIRU 36 × 1.5 BL	36"	914	1.5"	38	8	8/0044

VERTICAL OUTSIDE



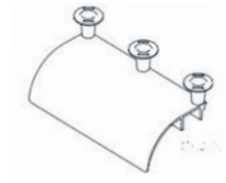
	WIDTH		DEPTH		Weight LBS/EA	FINISH REF. BLACK
	inch	mm	inch	mm		
BIRU 6 × 1.5 BL	6"	152	1.5"	38	4	8/0054
BIRU 12 × 1.5 BL	12"	304	1.5"	38	5	8/0005
BIRU 18 × 1.5 BL	18"	457	1.5"	38	6	8/0006
BIRU 24 × 1.5 BL	24"	609	1.5"	38	7	8/0007
BIRU 36 × 1.5 BL	36"	914	1.5"	38	8	8/0044

HORIZONTAL ELBOW



	WIDTH		DEPTH		Weight LBS/EA	FINISH REF. BLACK
	inch	mm	inch	mm		
BIRU HE 6 BL	6"	152	1.5"	38	7	8/0008
BIRU HE 12 BL	12"	304	1.5"	38	8	8/0009
BIRU HE 18 BL	18"	457	1.5"	38	9	8/0010
BIRU HE 24 BL	24"	609	1.5"	38	10	8/0011
BIRU HE 36 BL	36"	914	1.5"	38	11	8/0043

HORIZONTAL DROP



	SIZE		FINISH
	inch	mm	REF. BLACK
BIRU RAD Drop 6 BL	6"	152	8/0018
BIRU RAD Drop 12 BL	12"	304	8/0035
BIRU RAD Drop 18 BL	18"	457	8/0036
BIRU RAD Drop 24 BL	24"	609	8/0037
BIRU RAD Drop 36 BL	36"	914	8/0038

45 AND 90 DEGREE SPLICER KITS



	FINISH
	REF. BLACK
BIRU 45° Spl BL	8/0013
BIRU 90° Spl BL	8/0014

JUNCTION SPLICE KIT



	FINISH
	REF. BLACK
BIRU Junc SPL BL	8/0015

ADJUSTABLE SPLICE KIT



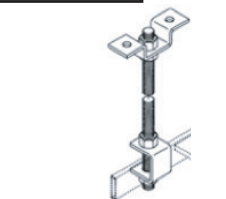
	FINISH
	REF. BLACK
BIRU Adj Spl BL	8/0016

BUTT-SPLICE KIT



	FINISH
	REF. BLACK
BIRU BSPL Kit BL	8/0008

THREADED ROD CEILING KIT



	FINISH
	REF. BLACK
BIRU TRCK	8/0017

HORIZONTAL DROP



WALL ANGLE SUPPORT KIT



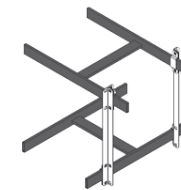
MOUNTING PLATE KIT



TRIANGLE WALL SUPPORT KIT



STAND OFF KIT



	SIZE		FINISH
	inch	mm	REF. BLACK
BIRU RAD String 6 BL	6"	152	8/0019
BIRU RAD String 12 BL	12"	304	8/0039
BIRU RAD String 18 BL	18"	457	8/0040
BIRU RAD String 24 BL	24"	609	8/0041
BIRU RAD String 36 BL	36"	914	8/0042

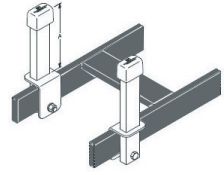
	SIZE		FINISH
	inch	mm	REF. BLACK
BIRU WAS 6 BK	6"	152	8/0030
BIRU WAS 12 BK	12"	304	8/0031
BIRU WAS 18 BK	18"	457	8/0032
BIRU WAS 24 BK	24"	609	8/0033
BIRU WAS 36 BK	36"	914	8/0034

	SIZE		FINISH
	inch	mm	REF. BLACK
BIRU RTR 12 BL	12"	304	8/0045
BIRU RTR 18 BL	18"	457	8/0046
BIRU RTR 24 BL	24"	609	8/0047

	RUNWAY WIDTH SUPPORTED		FINISH
	inch	mm	REF. BLACK
BIRU Tri WAS 6 BK	6"	152	8/0025
BIRU Tri WAS 12 BK	12"	304	8/0026
BIRU Tri WAS 18 BK	18"	457	8/0027
BIRU Tri WAS 24 BK	24"	609	8/0028
BIRU Tri WAS 36 BK	36"	914	8/0029

	SIZE		FINISH
	inch	mm	REF. BLACK
BIRU SOK	12"	300	8/0048

RETAINING POST



	SIZE		FINISH
	inch	mm	REF. BLACK
BIRU 6 CTP	6"	152	8/0049
BIRU 12 CTP	8"	203	8/0050
BIRU 18 CTP	10"	254	8/0051

GROUNDING KIT



	FINISH
BIRU GK	REF. BLACK 8/0052

FLOOR SUPPORT KIT



	FINISH
BIRU FSK	REF. BLACK 8/0055

VERTICAL WALL BRACKET



	FINISH
BIRU VWB	REF. BLACK 8/0056

END CAPS



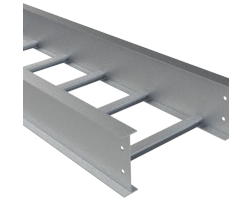
	FINISH
BIRU EC	REF. BLACK 8/0057

J-BOLT KIT



	LENGTH		FINISH
	inch	mm	REF. BLACK
BIRU 3 JBK	3"	76	8/0063

IL LADDER H4"



MODEL	WIDTH	HEIGHT H4"
	inch	P=9"
NEMA 16A/12C	9"	2/10325
	12"	2/10326
	18"	2/10327
	24"	2/10328
	30"	2/10329
	36"	2/10330

8x 21 2096 SS304 + 2X JUI

IL LADDER H6"



MODEL	WIDTH	HEIGHT H6"
	inch	P=9"
NEMA 20A/16B/12C	9"	2/10337
	12"	2/10338
	18"	2/10339
	24"	2/10340
	30"	2/10341
	36"	2/10342

8x 21 2096 SS304 + 2X JUI

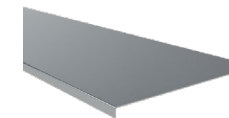
IR LADDER H6"



MODEL	WIDTH	HEIGHT H6"
	inch	P=9"
NEMA 20C	9"	2/10451
	12"	2/10452
	18"	2/10453
	24"	2/10454
	30"	2/10455
	36"	2/10456

8x 21 2096 SS304 + 2X JUI

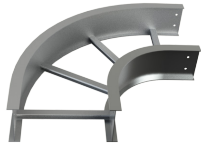
COVER TI



MODEL	WIDTH	ALUMINUM
	inch	REF.
TI 9"	9"	2/12081
TI 12"	12"	2/12082
TI 18"	18"	2/12083
TI 24"	24"	2/12084
TI 30"	30"	2/12085
TI 36"	36"	2/12086



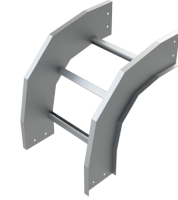
CPI FLAT BEND



MODEL	WIDTH	HEIGHT H4"			HEIGHT H6"		
	inch	Radius=12"	Radius=24"	Radius=36"	Radius=12"	Radius=24"	Radius=36"
CPI-30°	9"	2/10477	2/10498	2/10519	2/10593	2/10611	2/10629
	12"	2/10478	2/10499	2/10520	2/10594	2/10612	2/10630
	18"	2/10479	2/10500	2/10521	2/10595	2/10613	2/10631
	24"	2/10480	2/10501	2/10522	2/10596	2/10614	2/10632
	30"	2/10481	2/10502	2/10523	2/10597	2/10615	2/10633
	36"	2/10482	2/10503	2/10524	2/10598	2/10616	2/10634
CPI-45°	9"	2/10484	2/10505	2/10526	2/10599	2/10617	2/10635
	12"	2/10485	2/10506	2/10527	2/10600	2/10618	2/10636
	18"	2/10486	2/10507	2/10528	2/10601	2/10619	2/10637
	24"	2/10487	2/10508	2/10529	2/10602	2/10620	2/10638
	30"	2/10488	2/10509	2/10530	2/10603	2/10621	2/10639
	36"	2/10489	2/10510	2/10531	2/10604	2/10622	2/10640
CPI-90°	9"	2/10491	2/10512	2/10533	2/10605	2/10623	2/10641
	12"	2/10492	2/10513	2/10534	2/10606	2/10624	2/10642
	18"	2/10493	2/10514	2/10535	2/10607	2/10625	2/10643
	24"	2/10494	2/10515	2/10536	2/10608	2/10626	2/10644
	30"	2/10495	2/10516	2/10537	2/10609	2/10627	2/10645
	36"	2/10496	2/10517	2/10538	2/10610	2/10628	2/10646

8x 212096 SS304 + 2X JUI

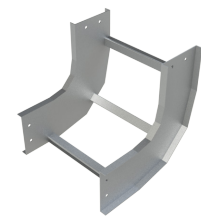
CXI OUTSIDE BEND



MODEL	WIDTH	HEIGHT H4"			HEIGHT H6"		
	inch	Radius=12"	Radius=24"	Radius=36"	Radius=12"	Radius=24"	Radius=36"
CXI-30°	9"	2/10819	2/10840	2/10861	2/10935	2/10953	2/10971
	12"	2/10820	2/10841	2/10862	2/10936	2/10954	2/10972
	18"	2/10821	2/10842	2/10863	2/10937	2/10955	2/10973
	24"	2/10822	2/10843	2/10864	2/10938	2/10956	2/10974
	30"	2/10823	2/10844	2/10865	2/10939	2/10957	2/10975
	36"	2/10824	2/10845	2/10866	2/10940	2/10958	2/10976
CXI-45°	9"	2/10826	2/10847	2/10868	2/10941	2/10959	2/10977
	12"	2/10827	2/10848	2/10869	2/10942	2/10960	2/10978
	18"	2/10828	2/10849	2/10870	2/10943	2/10961	2/10979
	24"	2/10829	2/10850	2/10871	2/10944	2/10962	2/10980
	30"	2/10830	2/10851	2/10872	2/10945	2/10963	2/10981
	36"	2/10831	2/10852	2/10873	2/10946	2/10964	2/10982
CXI-90°	9"	2/10833	2/10854	2/10875	2/10947	2/10965	2/10983
	12"	2/10834	2/10855	2/10876	2/10948	2/10966	2/10984
	18"	2/10835	2/10856	2/10877	2/10949	2/10967	2/10985
	24"	2/10836	2/10857	2/10878	2/10950	2/10968	2/10986
	30"	2/10837	2/10858	2/10879	2/10951	2/10969	2/10987
	36"	2/10838	2/10859	2/10880	2/10952	2/10970	2/10988

8x 212096 SS304 + 2X JUI

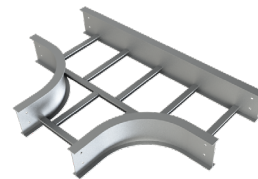
CCI INSIDE BEND



MODEL	WIDTH	HEIGHT H4"			HEIGHT H6"		
	inch	Radius=12"	Radius=24"	Radius=36"	Radius=12"	Radius=24"	Radius=36"
CCI-30°	9"	2/10648	2/10669	2/10690	2/10764	2/10782	2/10800
	12"	2/10649	2/10670	2/10691	2/10765	2/10783	2/10801
	18"	2/10650	2/10671	2/10692	2/10766	2/10784	2/10802
	24"	2/10651	2/10672	2/10693	2/10767	2/10785	2/10803
	30"	2/10652	2/10673	2/10694	2/10768	2/10786	2/10804
	36"	2/10653	2/10674	2/10695	2/10769	2/10787	2/10805
CCI-45°	9"	2/10655	2/10676	2/10697	2/11070	2/10788	2/10806
	12"	2/10656	2/10677	2/10698	2/11071	2/10789	2/10807
	18"	2/10657	2/10678	2/10699	2/11072	2/10790	2/10808
	24"	2/10658	2/10679	2/10700	2/11073	2/10791	2/10809
	30"	2/10659	2/10680	2/10701	2/11074	2/10792	2/10810
	36"	2/10660	2/10681	2/10702	2/11075	2/10793	2/10811
CCI-90°	9"	2/10662	2/10683	2/10704	2/10776	2/10794	2/10812
	12"	2/10663	2/10684	2/10705	2/10777	2/10795	2/10813
	18"	2/10664	2/10685	2/10706	2/10778	2/10796	2/10814
	24"	2/10665	2/10686	2/10707	2/10779	2/10797	2/10815
	30"	2/10666	2/10687	2/10708	2/10780	2/10798	2/10816
	36"	2/10667	2/10688	2/10709	2/10781	2/10799	2/10817

8x 212096 SS304 + 2X JUI

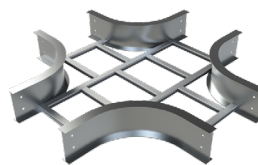
TEI TEE BEND



MODEL	WIDTH	HEIGHT H4"			HEIGHT H6"		
	inch	Radius=12"	Radius=24"	Radius=36"	Radius=12"	Radius=24"	Radius=36"
TEI-90°	9"	2/10990	2/10997	2/11004	2/11028	2/11034	2/11040
	12"	2/10991	2/10998	2/11005	2/11029	2/11035	2/11041
	18"	2/10992	2/10999	2/11006	2/11030	2/11036	2/11042
	24"	2/10993	2/11000	2/11007	2/11031	2/11037	2/11043
	30"	2/10994	2/11001	2/11008	2/11032	2/11038	2/11044
	36"	2/10995	2/11002	2/11009	2/11033	2/11039	2/11045

8x 212096 SS304 + 2X JUI

CRI CROSS BEND



MODEL	WIDTH	HEIGHT H4"			HEIGHT H6"		
	inch	Radius=12"	Radius=24"	Radius=36"	Radius=12"	Radius=24"	Radius=36"
CRI-90°	9"	2/11047	2/11054	2/11061	2/11085	2/11091	2/11097
	12"	2/11048	2/11055	2/11062	2/11086	2/11092	2/11098
	18"	2/11049	2/11056	2/11063	2/11087	2/11093	2/11099
	24"	2/11050	2/11057	2/11064	2/11088	2/11094	2/11100
	30"	2/11051	2/11058	2/11065	2/11089	2/11095	2/11101
	36"	2/11052	2/11059	2/11066	2/11090	2/11096	2/11102

8x 212096 SS304 + 2X JUI

RII LEFT REDUCTION BEND



MODEL	WIDTH (B1XB2)		HEIGHT H4"	HEIGHT H6"
	inch	inch	REF.	REF.
	9"	6"	2/11103	-
	12"	9"	2/11104	2/11130
	12"	6"	2/11105	-
	18"	12"	2/11106	2/11131
	18"	9"	2/11107	2/11132
	18"	6"	2/11108	-
	24"	18"	2/11109	2/11133
	24"	12"	2/11110	2/11134
	24"	9"	2/11111	2/11135
	30"	24"	2/11112	2/11136
	30"	18"	2/11113	2/11137
	30"	12"	2/11114	2/11138
	36"	30"	2/11115	2/11139
	36"	24"	2/11116	2/11140
	36"	18"	2/11117	2/11141

RII LEFT REDUCTION BEND

8x 212096 SS304 + 2X JUI

RDI RIGHT REDUCTION BEND

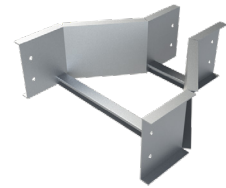


MODEL	WIDTH (B1XB2)		HEIGHT H4"	HEIGHT H6"
	inch	inch	REF.	REF.
	9"	6"	2/11181	-
	12"	9"	2/11182	2/11208
	12"	6"	2/11183	-
	18"	12"	2/11184	2/11209
	18"	9"	2/11185	2/11210
	18"	6"	2/11186	-
	24"	18"	2/11187	2/11211
	24"	12"	2/11188	2/11212
	24"	9"	2/11189	2/11213
	30"	24"	2/11190	2/11214
	30"	18"	2/11191	2/11215
	30"	12"	2/11192	2/11216
	36"	30"	2/11193	2/11217
	36"	24"	2/11194	2/11218
	36"	18"	2/11195	2/11219

RDI RIGHT REDUCTION BEND

8x 212096 SS304 + 2X JUI

RCI CENTRAL REDUCTION BEND



MODEL	WIDTH (B1XB2)		HEIGHT H4"	HEIGHT H6"
	inch	inch	REF.	REF.
	9"	6"	2/11142	-
	12"	9"	2/11143	2/11169
	12"	6"	2/11144	-
	18"	12"	2/11145	2/11170
	18"	9"	2/11146	2/11171
	18"	6"	2/11147	-
	24"	18"	2/11148	2/11172
	24"	12"	2/11149	2/11173
	24"	9"	2/11150	2/11174
	30"	24"	2/11151	2/11175
	30"	18"	2/11152	2/11176
	30"	12"	2/11153	2/11177
	36"	30"	2/11154	2/11178
	36"	24"	2/11155	2/11179
	36"	18"	2/11156	2/11180

RCI CENTRAL REDUCTION BEND

8x 212096 SS304 + 2X JUI

UNION JOINT JUI



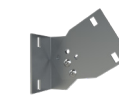
	HEIGHT		ALUMINUM
	inch	mm	REF.
JUI 4"	4"	100	2/11220
JUI 6"	6"	150	2/11222

UNION JOINT JUI-A



	HEIGHT		ALUMINUM
	inch	mm	REF.
JUI-A 4"	4"	100	2/11223
JUI-A 6"	6"	150	2/11225

UNION JOINT JUI-A



	HEIGHT		ALUMINUM
	inch	mm	REF.
JUI-A 4"	4"	100	2/15062
JUI-A 5"	6"	150	2/15064

UNION JOINT JUI-B



	HEIGHT		ALUMINUM
	inch	mm	REF.
JUI-B 4"	4"	100	2/11236
JUI-B 5"	6"	150	2/11238

SCREWS B3



	SS304	SS3016
	REF.	REF.
B3-50	212096	2/15575

BEV



	HDG	SS304
	REF.	REF.
BEV	211805	2/14473

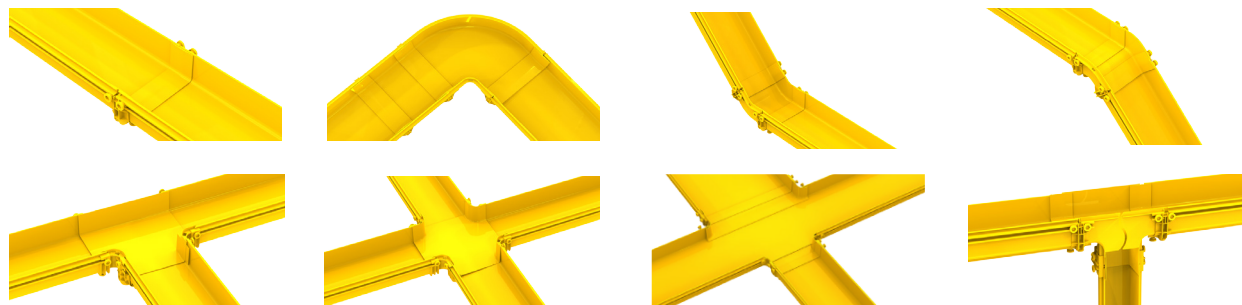
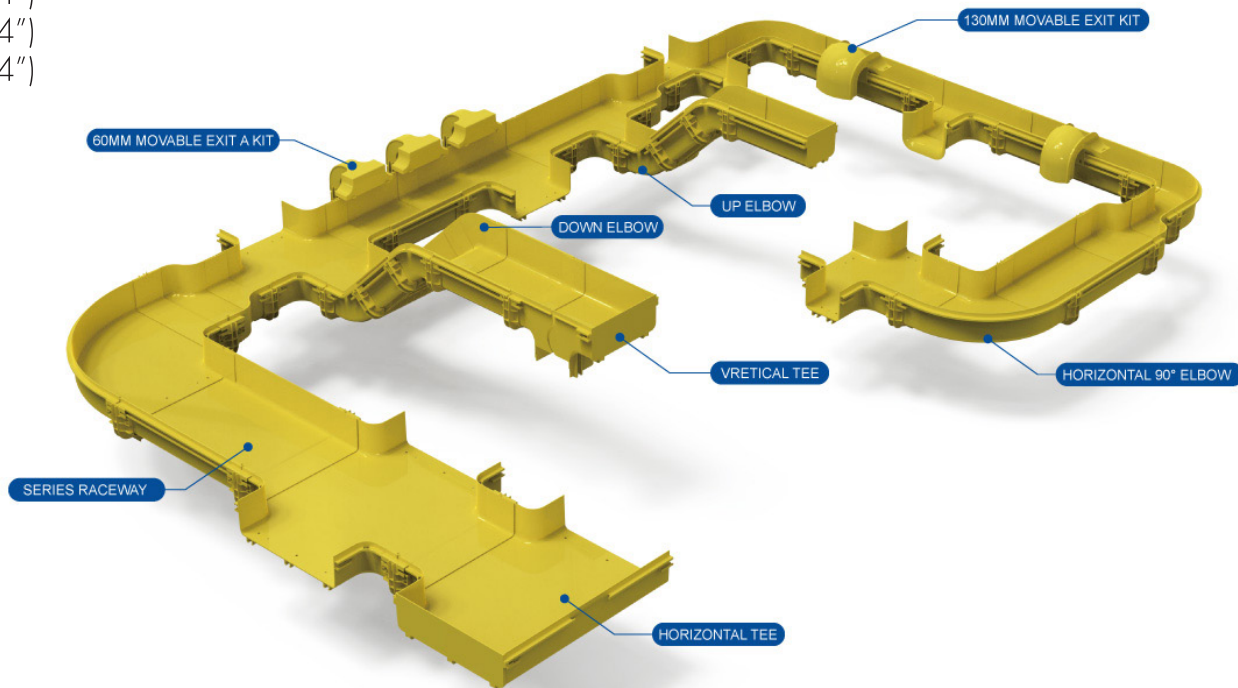
COVER CLAMP PTI



	ALUMINUM
	REF.
PTI	2/12095

Fiber Management

Sizes:
(2x2")
(6x4")
(10x4")
(14x4")
(24x4")



Special solutions

Basor provides a safe, easy-to-use and cost-effective management system for fragile optical cables. This system allows you to route fiber-optic cables between equipment, providing both the physical protection and bend radius management crucial to optical cable performance. The product made in Halogen-free PC-ABS material, compliant with UL 94 V-0 is designed to make optical cable management systems safe and easy-to-use. Possibility to create fully modular and scalable system with bend radius protection and is designed for three installation variables: hung from ceiling, top of rack support or a combination of these (multilevel installation).

*Coming soon!
Product available only on request

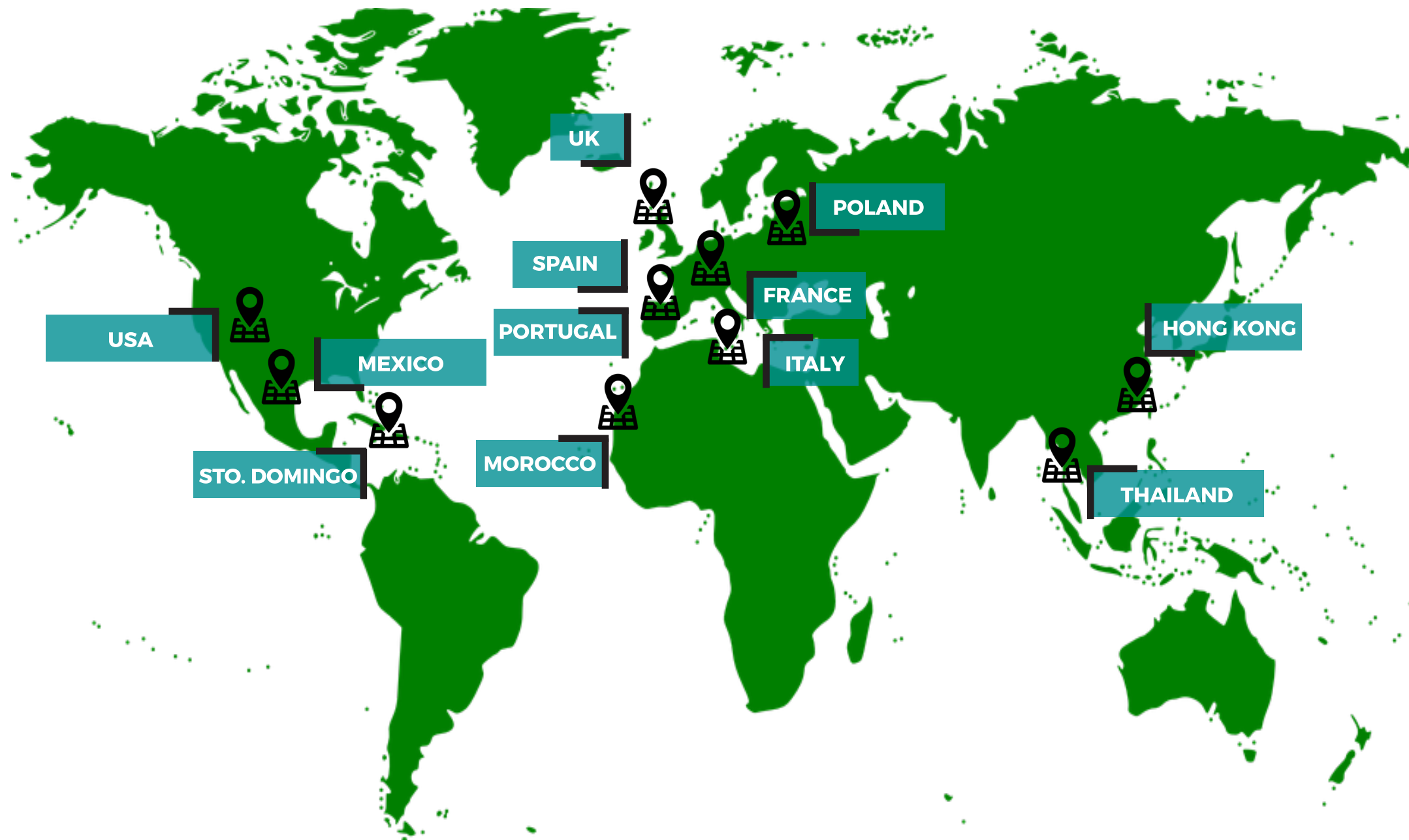
CHARACTERISTICS

- Designed to make optical cable management systems safe and easy-to-use
- Fully modular, scalable system
- Bend radius protection
- Halogen-free PC-ABS material, compliant with UL 94 V-0
- Designed for three installation variables: hung from ceiling, top of rack support or a combination of these
- Multilevel installation

Our experience

For the last 20 years Basor's International Projects team has been working in more than 40 countries and growing economies to deliver the best solutions and technical products for its situations. These projects improve the quality of infrastructures systems and help us to offer the best of us. We work with engineering, EPCs and installers to help them do this.

+70 Data center projects **worldwide**



The world is GREEN!

50 Countries with permanent stock
1300 Global distributors
10 Own subsidiaries



AMERICA

USA Basor Electric Inc. (Illinois)
MEXICO Basor México SAPI de CV. (Mexico DF)
PERU Basor Perú SAC. (Lima)

EUROPE

PORTUGAL Basor Caminho de Cabos LDA. (Barreiro)
FRANCE Basor SARL. (Paris)
HUNGARY Basor Elektro KFT. (Budapest)
UK Basor Electric LTD (Kent)
ITALY Basor Electric SRL (Parma)

AFRICA

ALGERIA Basor Electric SARL. (Argel)

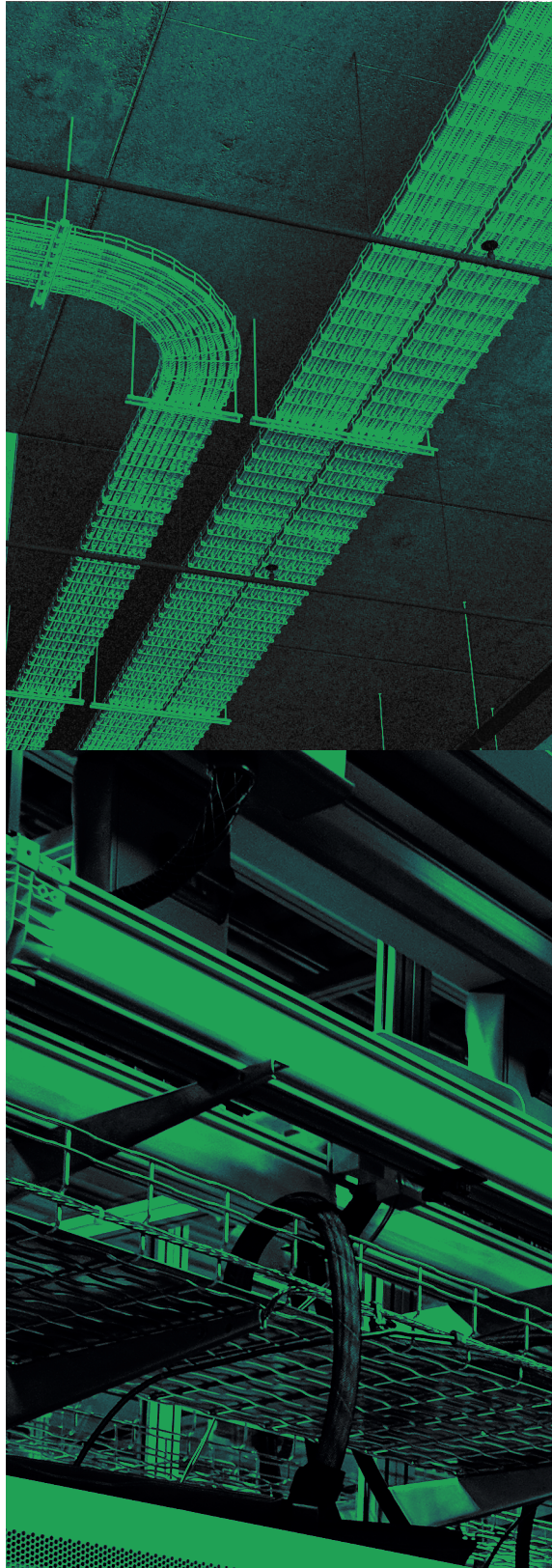
ASIA

THAILAND BasorThai (Bangkok)

HEADQUARTERS (EU)

SPAIN Basor Electric SA (Gandia)

Notes



BE Basor
CABLE TRAY SPECIALIST

Basor Electric S.A

604 Mulberry Street, Milstadt

Illinois 62260 - USA -

Telephone: 618 476 6300

Fax: 618 476 6301

Toll Free: 844 393 3985 customer.service@basor.com