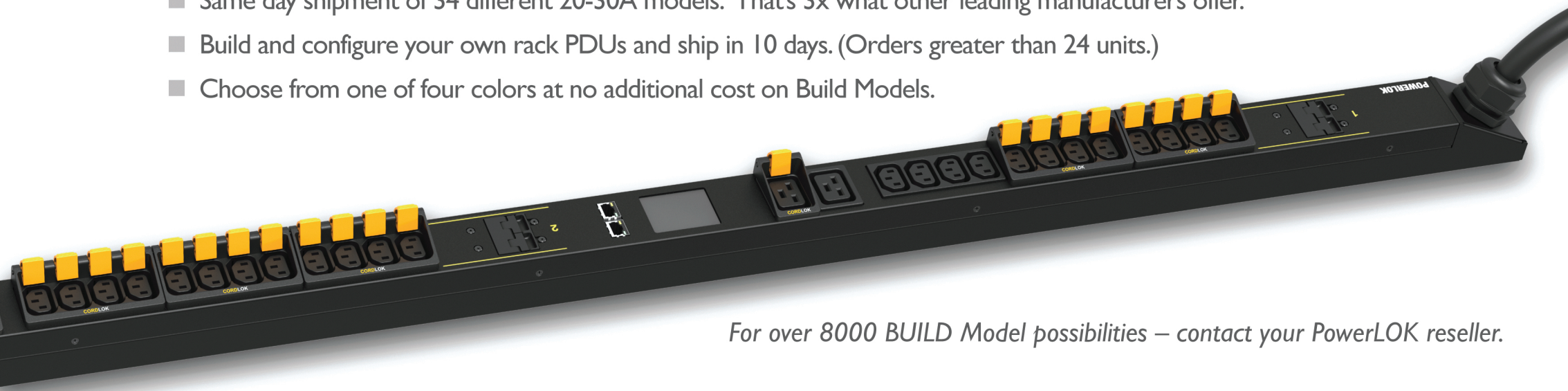


PowerLOK offers advantages not found on other Rack PDUs

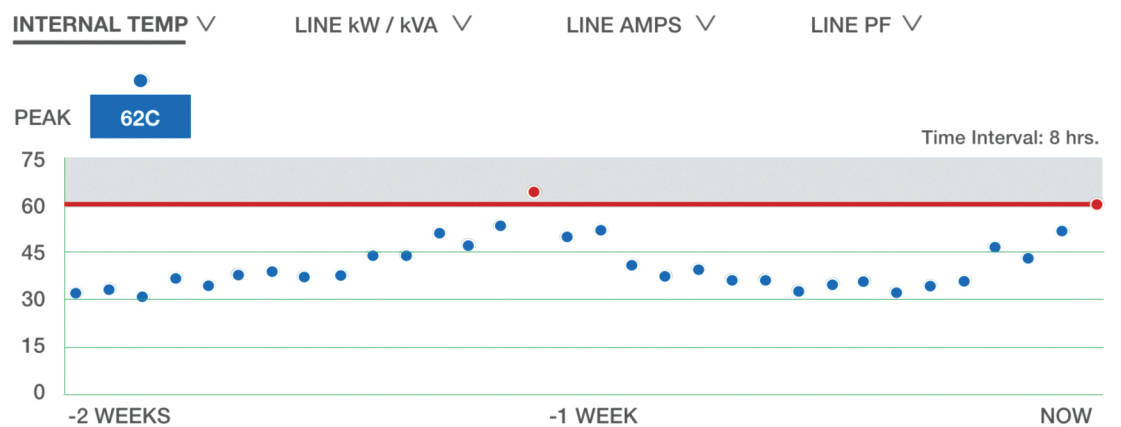
- Higher reliability with machine soldered connections from line input to each receptacle.
- 0.5% accuracy and a completely buttonless touch-screen display on monitored models.
- Same day shipment of 34 different 20-30A models. That's 3x what other leading manufacturers offer.
- Build and configure your own rack PDUs and ship in 10 days. (Orders greater than 24 units.)
- Choose from one of four colors at no additional cost on Build Models.



For over 8000 BUILD Model possibilities – contact your PowerLOK reseller.

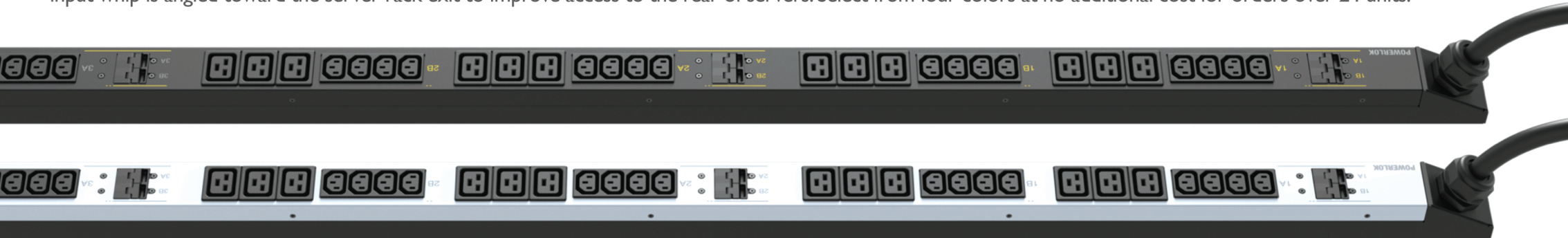
Internal Temperature Reporting

Rack PDU internal temperature is available on monitored units and communicates via SNMP, or you can browse to the PDU's web server where alarm set-points can be updated to meet your requirements.



Slim High-Quality Vertical Design

Measuring only 2.18" wide x 2.0" deep, PowerLOK has the greatest receptacle density in the industry - 48C13s, 24C13s & 18C19s, or 12C13s & 24C19s on a 72" rack PDU. Many more high-density receptacle options are available. Group markings are highly visible, and receptacles have a low profile to protect them from impact. PowerLOK's input whip is angled toward the server rack exit to improve access to the rear of servers. Select from four colors at no additional cost for orders over 24 units.



Greater Reliability

PowerLOK Rack PDUs are 3X less likely to fail over most competitive units. Our automated machine soldering from line input to each receptacle eliminates all types of mechanical connections.

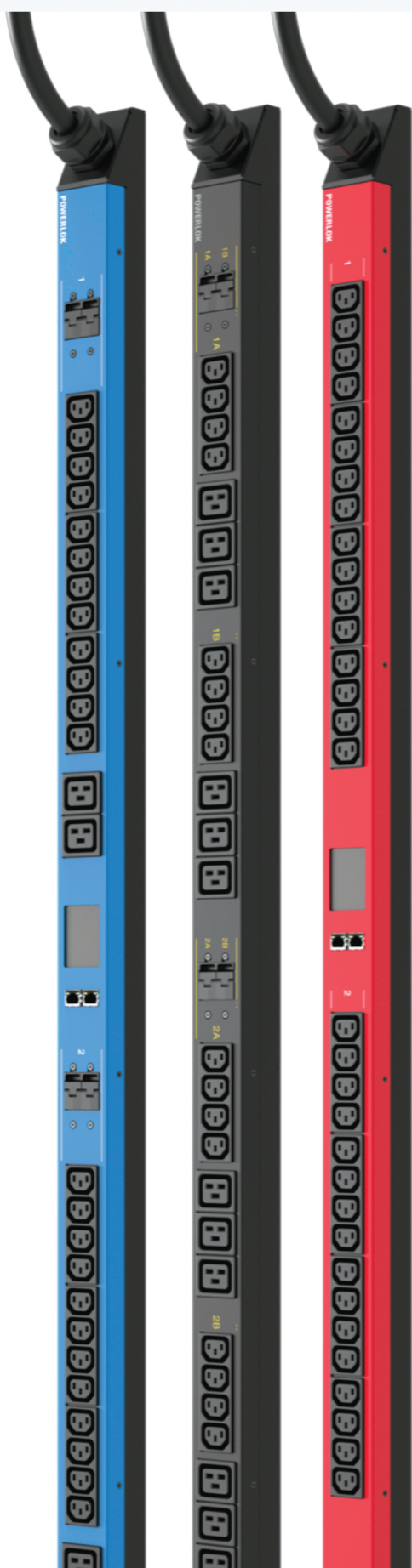
- Say goodbye to dead on arrival Rack PDUs.
- No rat's nest wiring as in legacy products.
- White paper / reliability study available.



Evaluated to be 270% less likely to experience power connection failure. Steve Fairfax, mtechnology.

Universal Cord Locking

CordLOK works with your server cords, does not require you to sacrifice high receptacle density, and allows single hand insertion and removal of cords. CordLOK clicks when cord is fully inserted. To remove, simply roll wheel with your thumb while pulling on the cord. Available on Build Models.



MONITORED Rack PDU Specification

CUSTOMER SIGNATURE _____ DATE APPROVED _____
 Customer agrees to this specific PowerLok configuration

PowerLok Configuration Model: XP7153D	
RACK PDU MONITORED 72", 20A 240/415V 3PH (11.5 kW), 36-C13 & 12-C19, 10FT WHIP, IEC 309 20A	
POWER	20A 240/415V 3PH 11.5 kW
UNIT LENGTH	72 IN
PLUG TYPE	IEC 309 20A
WHIP LENGTH	10 FT
RECEPTACLES	36-C13 12-C19
CORDLOK	NONE
MONITORING	REMOTE & UNIT DISPLAY
120V TECH POWER	0
COLOR	CARBON

Electronic Document Signature

To assure customers get what they want, every PowerLOK order that is shipped has a prior approved specification document that gets electronically signed by the customer.

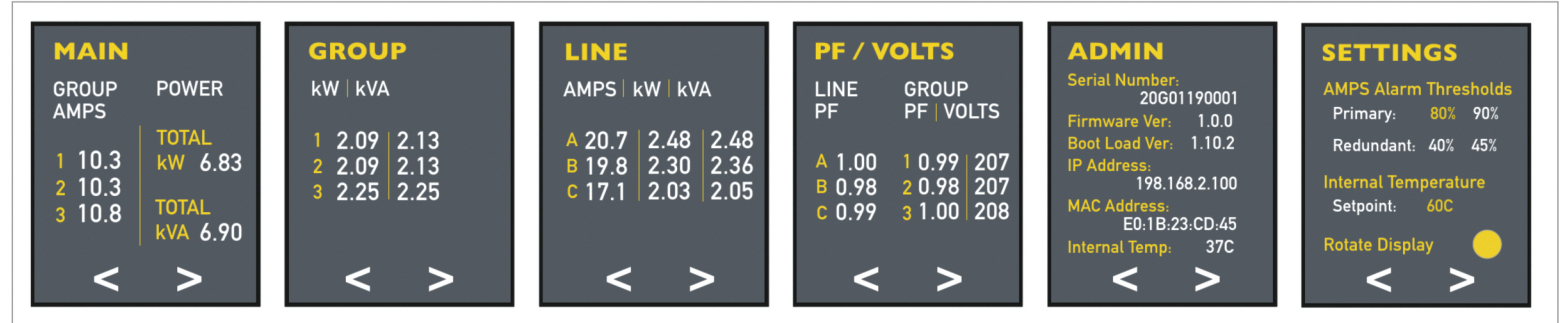
PowerLok Universal Specification	
Quote:	Customer:
Order No.:	Order Qty.:
Monitoring Accuracy	Voltage: +/- 0.5% at nominal. Current: +/-1% of measurement from 500mA to 30A. Within 0.5% from 1A to 30A typical.
Total Unit & Group Monitoring	Aggregate (kWh, W, VA) plus Phase: A, B, C Line Currents, plus Group: 1, 2, 3 Monitoring (kWh, W, VA, PF, V, A)
Network Interface	Ethernet RJ-45
Transport/Internet	TCP/IP v4, v6
Network Applications	HTTP, HTTPS (SSL) Webserver SNMP-V1/V2c and SNMP-V3 Network Management SMTP Email DHCP for dynamic IP address request from a server. DNS to resolve host names for email, NTP, and SNMP servers
Touch & Rotatable Digital Display	Touch to rotate / touch to view data screens
Internal RMS Voltage Sensor	Yes
Internal RMS Current Sensor	Yes
Over Current Protection	20A magnetic breakers on 30A models.
Power Whip	20A: 12AWG 3 or 5 wire & 30A: 10AWG 3 or 5 wire.
Operating Temperature	Full nameplate continuous operation: 0-50C (32-122F)
Heavy Steel - Powder Coat Color	See PowerLok Configuration Table for Color
Rack PDU Type	Vertical Rack-mount
Toolless Mounting: Center Spacing	61.25in (12.25 spacing standard). 59.05 mounting option available on Rack PDU.
Assembled in the USA	Yes - with local and off-shore sourced components
Product Warranty	3-year from date of shipment, repair or replace
Certification/Agency Approvals	TUV Certified to UL/CSA 60950-1 with NOM Addendum for Mexico, FCC Part 15 Class A Conformance, RoHS Compliant
Operating Environment	0-50C (32-122F), 5-95% Relative Humidity, 0-10,000ft (0-3000 meters) Elevation.
Storage Environment	-25-65C (32-122F), 5-95% Relative Humidity, 0-10,000ft (0-3000 meters) Elevation.
Chassis Dimensions (LxWxD)	72"L x 2.18"W x 2.0"D
Package Dimensions (LxWxD)	84.0"L x 22.0"W x 5.0"D (4-Pack) 84.0"L x 11.0"W x 5.0"D (2-Pack) 84.0"L x 7.0"W x 5.0"D (1-Pack)
Rack PDU Weight*	15.0 lbs.
Packaged Weight*	17.0 lbs (1 unit) *Actual weights vary depending on model.

Advanced Monitoring & Touchscreen Display

PowerLOK has a more advanced and reliable total monitoring solution not found on other rack PDUs. A fully functional and highly visible touchscreen display eliminates failure prone push-buttons. PowerLOK PDUs can be daisy chained to reduce network port use. Alarms on the main unit display and in the web based software appear in red when alarms are present.

- Simplified User Interface
- 0.5% Monitoring Accuracy

PowerLOK rack PDUs are programmed at our factory to be network silent devices in your facility - allowing your management software to collect the precision rack PDU data.



Embedded Web Server Simplifies Real-time and Historical Graphing.

Monitoring Accuracy, Voltage: +/- 0.5% at nominal.

Monitoring Accuracy, Current: Within 0.5% from 1A to 30A. +/-1% of measurement from 500mA to 30A.

Total Unit Monitoring: Aggregate (kWh, W, VA) plus Phase: A, B, C Line Currents, plus Group: 1, 2, 3 Monitoring (kWh, W, VA, PF, V, A).

Network Interface & Transport/Internet: Ethernet RJ-45 & TCP/IP v4, v6, RSTP Ethernet daisy chain capability.

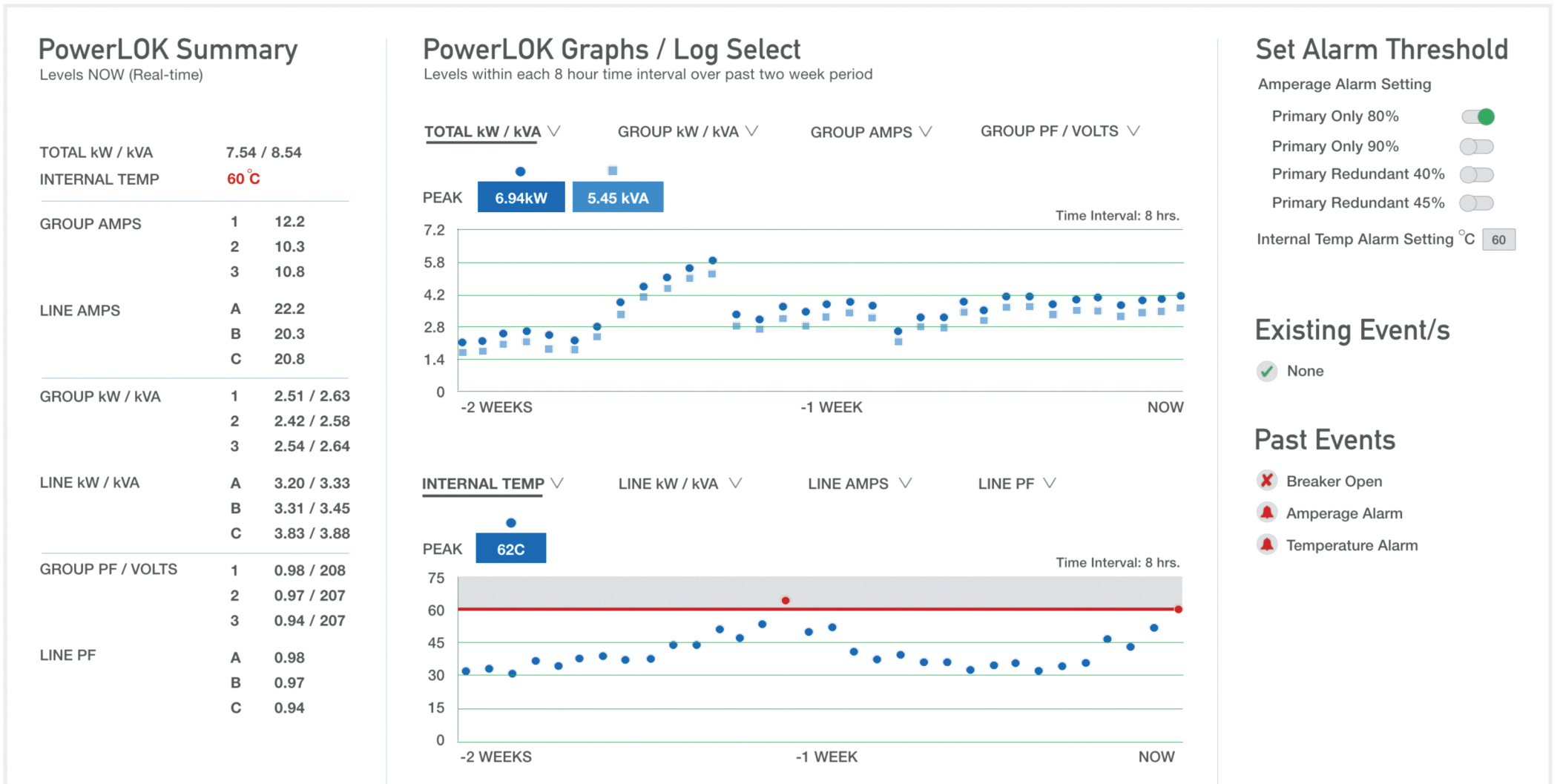
Network Applications:

HTTP, HTTPS (SSL) Webserver.

SNMP-V1/V2c /V3 Network Management, SMTP Email.

DHCP for dynamic IP address request from a server.

DNS to resolve host names for email, NTP, and SNMP servers.



PowerLOK Select Models

With an order placed before noon, Select Monitored and Select Basic models ship same day.

34

Select Monitored Models

Select Models Available

20A 120/208V WYE 3PH

- XP7101D** RACK PDU, MONITORED, 72", 20A 120/208V 3PH (5.7 kW), 48-C13, 10FT WHIP, NEMA L21-20P, CARBON
- XP7102D** RACK PDU, MONITORED, 72", 20A 120/208V 3PH (5.7 kW), 36-C13 & 6-C19, 10FT WHIP, NEMA L21-20P, CARBON
- XP7103D** RACK PDU, MONITORED, 72", 20A 120/208V 3PH (5.7 kW), 48-C13, (2)5-15R, 10FT WHIP, NEMA L21-20P, CARBON
- XP7104D** RACK PDU, MONITORED, 72", 20A 120/208V 3PH (5.7 kW), 36-C13 & 6-C19, (2)5-15R, 10FT WHIP, NEMA L21-20P, CARBON

20A 240/415V WYE 3PH

- XP7151D** RACK PDU, MONITORED, 72", 20A 240/415V 3PH (11.5 kW), 48-C13, 10FT WHIP, IEC 309 20A, CARBON
- XP7152D** RACK PDU, MONITORED, 72", 20A 240/415V 3PH (11.5 kW), 36-C13 & 6-C19, 10FT WHIP, IEC 309 20A, CARBON
- XP7153D** RACK PDU, MONITORED, 72", 20A 240/415V 3PH (11.5 kW), 36-C13 & 12-C19, 10FT WHIP, IEC 309 20A, CARBON

30A 120/208V WYE 3PH

- XP7201D** RACK PDU, MONITORED, 72", 30A 120/208V 3PH (8.6 kW), 48-C13, 10FT WHIP, NEMA L21-30P, CARBON
- XP7202D** RACK PDU, MONITORED, 72", 30A 120/208V 3PH (8.6 kW), 36-C13 & 6-C19, 10FT WHIP, NEMA L21-30P, CARBON
- XP7203D** RACK PDU, MONITORED, 72", 30A 120/208V 3PH (8.6 kW), 36-C13 & 6-C19, (1)5-15R, 10FT WHIP, NEMA L21-30P, CARBON

30A 240/415V WYE 3PH

- XP7251D** RACK PDU, MONITORED, 72", 30A 240/415V 3PH (17.2 kW), 48-C13, 10FT WHIP, IEC 309 30A, CARBON
- XP7252D** RACK PDU, MONITORED, 72", 30A 240/415V 3PH (17.2 kW), 24-C13 & 12-C19, 10FT WHIP, IEC 309 30A, CARBON
- XP7253D** RACK PDU, MONITORED, 72", 30A 240/415V 3PH (17.2 kW), 12-C13 & 18-C19, 10FT WHIP, IEC 309 30A, CARBON

20A 208V 1PH

- XP7301D** RACK PDU, MONITORED, 72", 20A 208V 1PH (3.3 kW), 32-C13, 10FT WHIP, NEMA L6-20P, CARBON
- XP7302D** RACK PDU, MONITORED, 72", 20A 208V 1PH (3.3 kW), 24-C13 & 4-C19, 10FT WHIP, NEMA L6-20P, CARBON

30A 208V 1PH

- XP7351D** RACK PDU, MONITORED, 72", 30A 208V 1PH (5.0 kW), 32-C13, 10FT WHIP, NEMA L6-30P, CARBON
- XP7352D** RACK PDU, MONITORED, 72", 30A 208V 1PH (5.0 kW), 36-C13 & 6-C19, 10FT WHIP, NEMA L6-30P, CARBON

Select Basic Models

20A 120/208V WYE 3PH

- XP7101** RACK PDU, BASIC, 72", 20A 120/208V 3PH (5.7 kW), 48-C13, 10FT WHIP, NEMA L21-20P, CARBON
- XP7102** RACK PDU, BASIC, 72", 20A 120/208V 3PH (5.7 kW), 36-C13 & 6-C19, 10FT WHIP, NEMA L21-20P, CARBON
- XP7103** RACK PDU, BASIC, 72", 20A 120/208V 3PH (5.7 kW), 48-C13, (2)5-15R, 10FT WHIP, NEMA L21-20P, CARBON
- XP7104** RACK PDU, BASIC, 72", 20A 120/208V 3PH (5.7 kW), 36-C13 & 6-C19, (2)5-15R, 10FT WHIP, NEMA L21-20P, CARBON

20A 240/415V WYE 3PH

- XP7151** RACK PDU, BASIC, 72", 20A 240/415V 3PH (11.5 kW), 48-C13, 10FT WHIP, IEC 309 20A, CARBON
- XP7152** RACK PDU, BASIC, 72", 20A 240/415V 3PH (11.5 kW), 36-C13 & 6-C19, 10FT WHIP, IEC 309 20A, CARBON
- XP7153** RACK PDU, BASIC, 72", 20A 240/415V 3PH (11.5 kW), 36-C13 & 12-C19, 10FT WHIP, IEC 309 20A, CARBON

30A 120/208V WYE 3PH

- XP7201** RACK PDU, BASIC, 72", 30A 120/208V 3PH (8.6 kW), 48-C13, 10FT WHIP, NEMA L21-30P, CARBON
- XP7202** RACK PDU, BASIC, 72", 30A 120/208V 3PH (8.6 kW), 36-C13 & 6-C19, 10FT WHIP, NEMA L21-30P, CARBON
- XP7203** RACK PDU, BASIC, 72", 30A 120/208V 3PH (8.6 kW), 36-C13 & 6-C19, (1)5-15R, 10FT WHIP, NEMA L21-30P, CARBON

30A 240/415V WYE 3PH

- XP7251** RACK PDU, BASIC, 72", 30A 240/415V 3PH (17.2 kW), 48-C13, 10FT WHIP, IEC 309 30A, CARBON
- XP7252** RACK PDU, BASIC, 72", 30A 240/415V 3PH (17.2 kW), 24-C13 & 12-C19, 10FT WHIP, IEC 309 30A, CARBON
- XP7253** RACK PDU, BASIC, 72", 30A 240/415V 3PH (17.2 kW), 12-C13 & 18-C19, 10FT WHIP, IEC 309 30A, CARBON

20A 208V 1PH

- XP7301** RACK PDU, BASIC, 72", 20A 208V 1PH (3.3 kW), 32-C13, 10FT WHIP, NEMA L6-20P, CARBON
- XP7302** RACK PDU, BASIC, 72", 20A 208V 1PH (3.3 kW), 24-C13 & 4-C19, 10FT WHIP, NEMA L6-20P, CARBON

30A 208V 1PH

- XP7351** RACK PDU, BASIC, 72", 30A 208V 1PH (5.0 kW), 32-C13, 10FT WHIP, NEMA L6-30P, CARBON
- XP7352** RACK PDU, BASIC, 72", 30A 208V 1PH (5.0 kW), 36-C13 & 6-C19, 10FT WHIP, NEMA L6-30P, CARBON

