

Leviton Wireless Structured Media™ Centers

Versatile enclosures for full wireless signal reach
in homes, small businesses, and multi-dwelling units



Structured Cabling for a Connected Lifestyle

Internet-connected devices now permeate all areas of residential and light commercial buildings. As a result, developers, business owners, and homeowners require a stronger wireless and wired network infrastructure. By consolidating network equipment in a Leviton **Wireless Structured Media™ Center**, users can boost network functionality, eliminate clutter, improve cooling of active equipment, and have an easily accessible location to manage all connected devices.

Connected Home Applications

- Smart speakers
- Whole house audio
- Laptops, PCs, mobile devices
- Lighting controls
- Intelligent thermostats
- Smart TVs
- Streaming media devices
- Game consoles
- Security
- Connected appliances



Every Home is Alive

Control your lights, lamps, and small appliances from your smart speaker or phone with Leviton's line of Smart Home solutions.

Learn more at [Leviton.com/DecoraSmart](https://www.leviton.com/DecoraSmart)



The Nerve Center of the Connected Home

Inside the Wireless Structured Media™ Center

Leviton offers an unparalleled selection of solutions for data networking, telephone, AV, and security distribution. And the **Wireless Structured Media Center** provides the ideal central distribution point to manage both wireless and wired networks.

See the full breadth of our solutions that support the latest residential technologies at Leviton.com/ConnectedHome

- 1 Structured Media Center
- 2 Data Patching and Distribution
- 3 Telephone Patching and Distribution
- 4 High-Flex Patch Cords
- 5 User or Service Provider Active Gear
- 6 Premium and Passive CATV Splitters
- 7 Integrated Power Supply



Revolutionizing the Little White Box

Unique Advantages of the Wireless Structured Media™ Center (SMC)

In addition to supporting the full reach of wireless signals, enclosures provide **easy installation**, **mounting flexibility**, **more capacity**, and **better thermal management**.



Learn more at [Leviton.com/SMCAdvantages](https://www.leviton.com/SMCAdvantages)

Tri-Plane Heat Dissipation

Vented Door promotes better intake of cool air and outward flow of warm air, maximizing performance and extending the life of active equipment.

Industry Leading Capacity

Enclosures have more cubic inches than other options on the market when used with Vented Door.

Retrofit Capability

Plastic doors work with metal Leviton SMCs, improving their wireless signals and allowing for Tri-Plane Heat Dissipation.

Door Versatility

Universal left or right side door orientation. Door opens 180° for better access, and is engineered so it won't shut on its own.

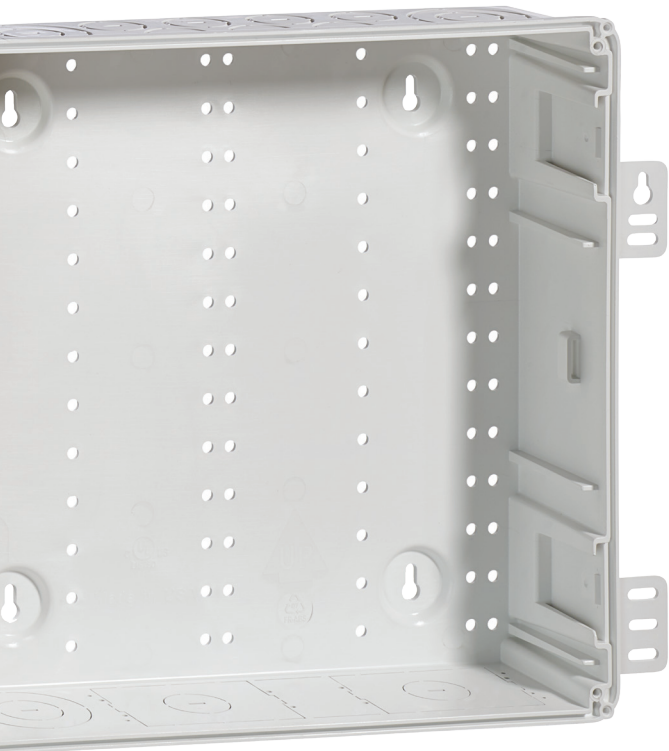
Ratcheting Hinge & Latch System

The system creates fast, tool-free door installations, and the ratcheting feature accommodates for wall imperfections and varying thickness of drywall.

Multi-Bay Attachment Tube

This accessory creates a multi-bay system between two fully independent SMCs, isolating enclosures for better security and heat containment.





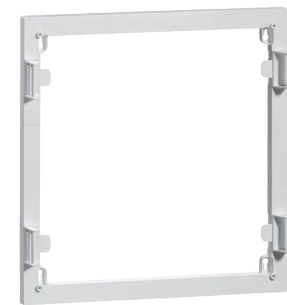
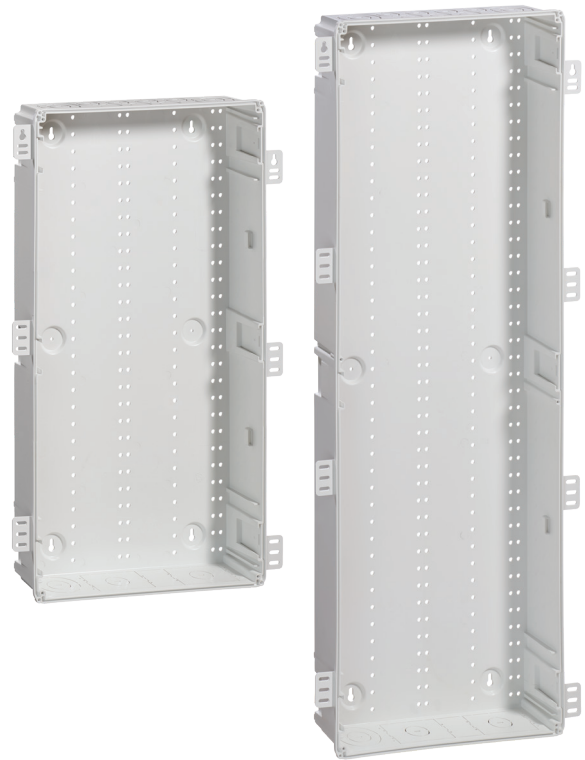
Versatile for Every Type of Location

Wireless Structured Media™ Center Enclosures, Doors and Covers

Available in three sizes, the Wireless Structured Media Centers support a wide range of building types and floor plans. Each model offers industry-leading capacity and integrated cable management features for enhanced internal organization.

Enclosure
49605-xxE

14" | 28" | 42"



Trim Ring Accessory
49605-xxT

14" | 28" | 42"



Vented Hinged Door
49605-xxS

14" | 28" | 42"

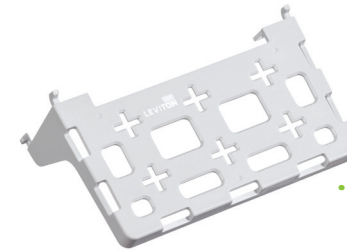


Vented Cover
(Bulk Packs Only) 49605-xxF

14" | 28"

Enhancing your Enclosure

Create a clean and organized Structured Media™ Center



..... **Universal Shelf Bracket**
Supports up to 20 pounds, mounts without push pins
49605-AUB



..... **Snap-in Saddle Ties with VELCRO®**
Provides vertical and horizontal cable management anywhere in the enclosure
49605-AST



..... **Cable Routing Ring**
Routes and stores cable slack
49605-AFR



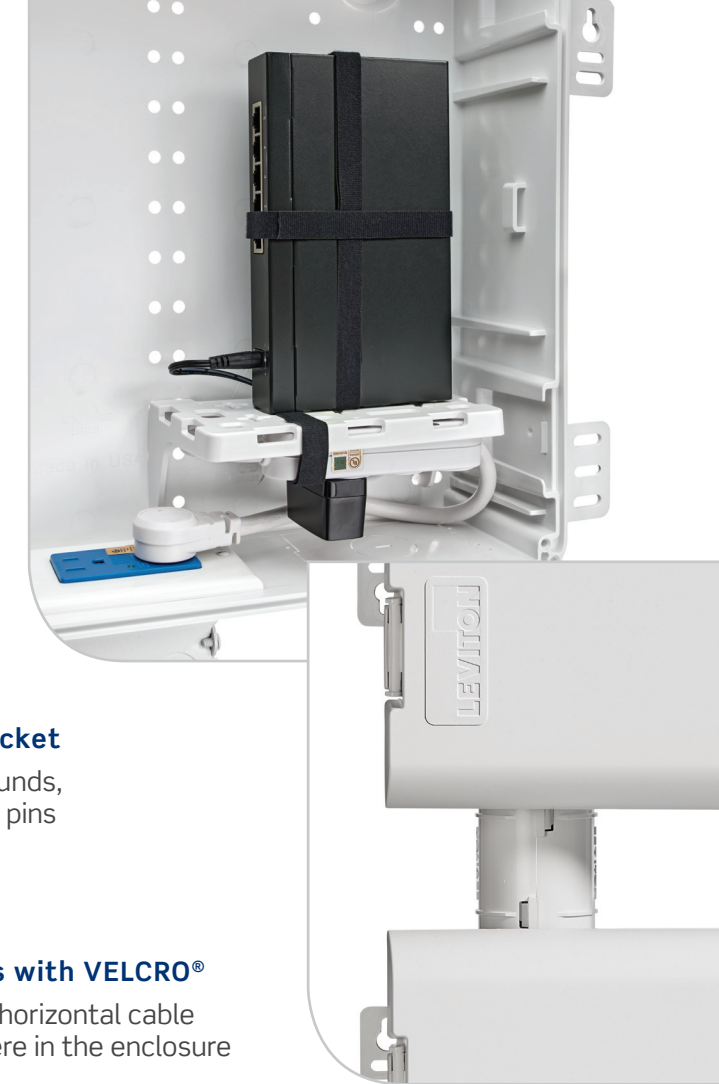
..... **Multi-Bay Connector Tube**
Allows for two Structured Media Centers to be stacked
49605-TUB



..... **3-Outlet Power Strip**
3 AC tamper-resistant outlets
49605-APS



..... **Grommet Accessory Pack**
Protect incoming/outgoing cables through knockouts
49605-GRM



Pictured above:
Universal Shelf Bracket, VELCRO®, Power Strip with Leviton power module, Multi-Bay Connector Tube

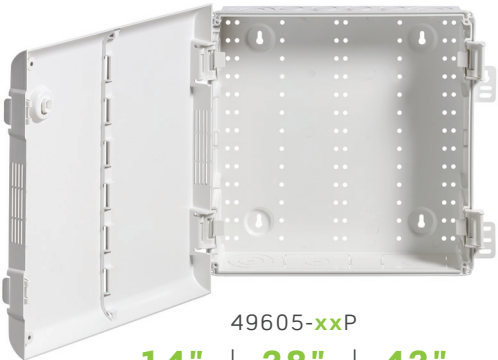
Finding the Right Structured Media™ Center



49605-140, 49605-28W
14" | 28"

Economy Solution Enclosure with Vented Cover

For the most cost-efficient solution, the 14" and 28" Wireless Structured Media Center enclosures are available with the industry's only Vented Cover (instead of the Vented Door), and are also available in installer-friendly bulk packs for large projects.



49605-xxP
14" | 28" | 42"

Standard Solution Enclosure with Vented Hinged Door

For a solution that is both feature rich and cost competitive, the 14", 28" and 42" enclosures are available with the Vented Hinged Door. The door adds the benefit of Tri-Plane Heat Dissipation for better airflow, and adds 18% more capacity.



49605-xxP + 49605-28T
14" | 28" | 42"

Premium Solution Enclosure with Vented Hinged Door and Trim Ring

For upscale installations, all three enclosures are also available with vented hinged door and additional trim ring. This setup adds the additional benefit of Tri-Plane Heat Dissipation and 18% more capacity. The Trim Ring also helps hide drywall cut-outs when the door is opened.

Retrofit your Metal Enclosure

Improve RF Transparency

Add a plastic Vented Cover or plastic Vented Hinged Door and Trim Ring to support stronger wireless signals.

- Adding a Vented Hinged Door creates Tri-Plane Heat Dissipation, which improves airflow and cooling for active equipment by as much as 40% over a vented metal door
- The Vented Hinged Door and Trim Ring add depth, increasing capacity inside the enclosure
- Plastic Vented Doors are compatible with 14", 28", and 42" metal enclosures



Pictured above:
14" Wireless SMC with Trim Ring and Vented Hinged Door

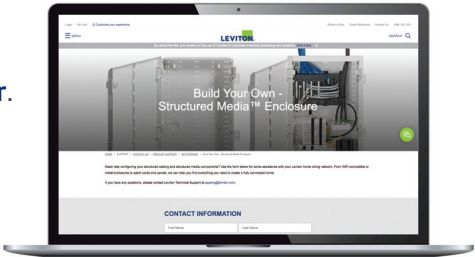
Online Resources

Make every installation easy with Leviton's online resources



Watch our helpful **step-by-step videos** for installing Structured Media Center enclosures, doors, and covers. You can also find video installation help for mounting Leviton Connected Home equipment, including power boxes, panels, splitters, and more. **Learn more at [Leviton.com/NS/Videos](https://www.leviton.com/NS/Videos).**

Get help creating your fully connected home with our **online configurator**. Answer some short questions, and then receive a Bill of Materials from one of our technical experts within one business day, free of charge. **Go to [Leviton.com/HomeConfig](https://www.leviton.com/HomeConfig).**





Multi-Dwelling Unit Configuration

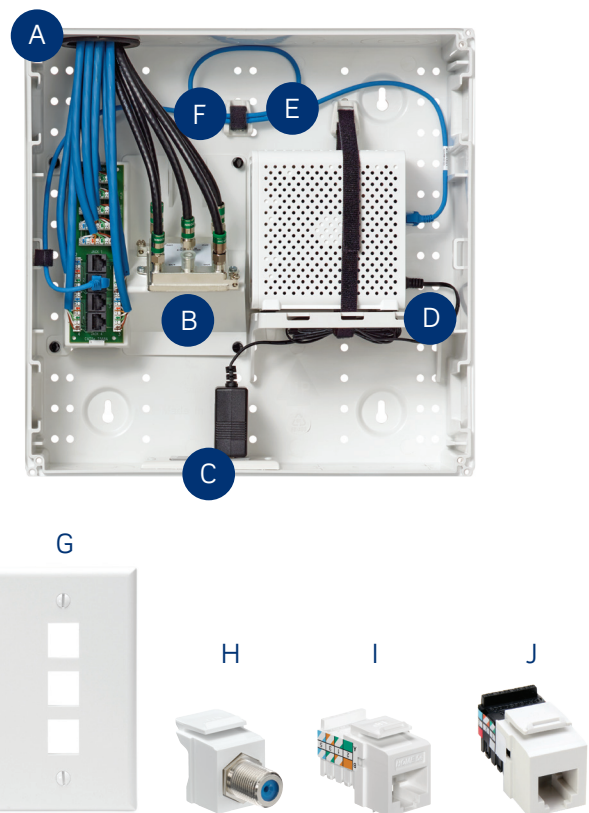
Install an infrastructure that delivers the high bandwidth tenants demand, while supporting high-end video and audio.

Product Configuration

Description	Part #	Qty
A 14" Wireless Enclosure with Vented Cover	49605-140	1
B Combo Panel with 1x4 Phone, Data and 1x6 Video Panel	47603-DP6	1
C Non-Surge J-Box Kit	47605-ACN	1
D Universal Shelf Bracket	49605-AUB	1
E GigaMax® Cat5e Patch Cord, 3ft, Blue (1 shown)	5G460-03L	3
F Saddle Tie Kit	49605-AST	1

Additional Connectivity

G 3-Port QuickPort® Wallplate	41080-3WP	3
H QuickPort F-Connector Coupler	41084-FWF	3
I HOME 5e® QuickPort Jack	5EHOM-RW5	3
J QuickPort 6P6C Phone Jack	41106-RW6	3



Single-Family Configuration

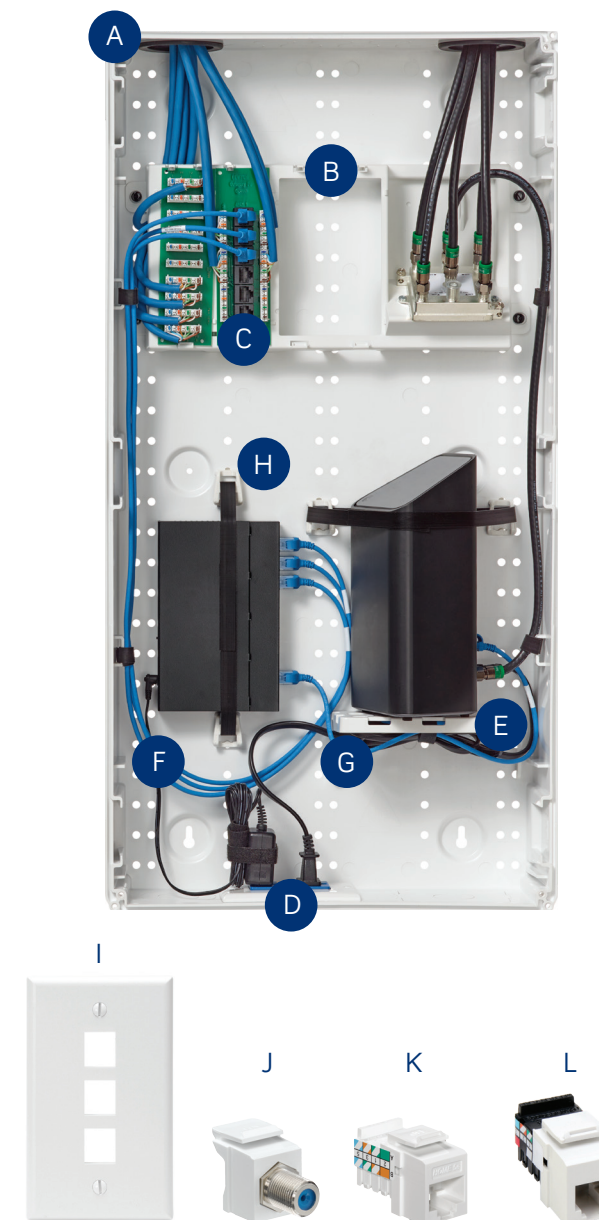
Streamline builder installs, outfit the home with core connectivity, and add space to allow for power support, active equipment, and expansion products.

Product Configuration

Description	Part #	Qty
A 28" Wireless Enclosure with Vented Cover	49605-28W	1
B Combo Panel with 1x9 Phone, Data and 1x6 Video Panel	47606-BTV	1
C Cat 5e Voice and Data Board	47603-0C5	1
D Duplex Receptacle with Surge	47605-ACS	1
E Universal Shelf Bracket	49605-AUB	1
F GigaMax® Cat 5e Patch Cord, 3ft, Blue (3 shown)	5G460-03L	4
G GigaMax Cat 5e Patch Cord, 1ft, Blue	5G460-01L	1
H Saddle Tie Kit	49605-AST	1

Additional Connectivity

I 3-Port QuickPort® Wallplate	41080-3WP	4
J QuickPort F-Connector Coupler	41084-FWF	4
K HOME 5e® QuickPort Jack	5EHOM-RW5	4
L QuickPort 6P6C Phone Jack	41106-RW6	4



Download PDFs of these popular configurations at [Leviton.com/ConnectedHome](https://www.leviton.com/ConnectedHome).

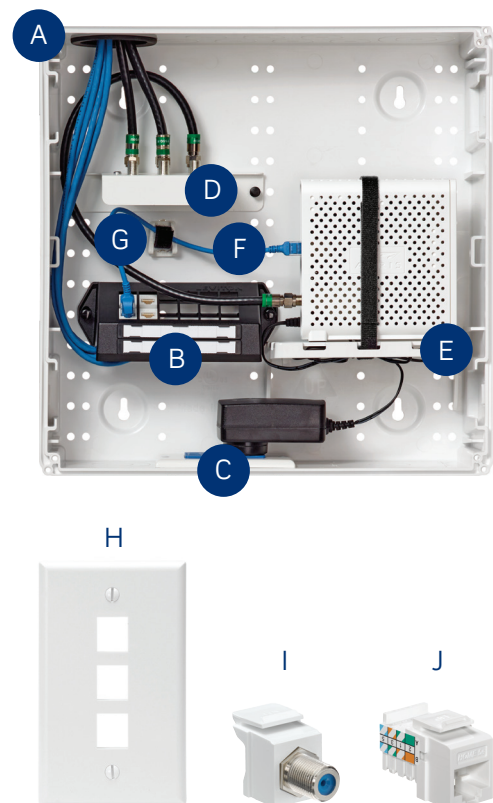


Student Housing Configuration

Load this campus environment with accessible and reliable internet connections for students who want high-speed access for research, entertainment, and social media.

Product Configuration

Description	Part #	Qty
A 14" Wireless Enclosure with Vented Cover	49605-140	1
B Empty 12-Port QuickPort® Mounting Bracket	47600-QPB	1
C Duplex Receptacle with Surge	47605-ACS	1
D 1x6 Passive Video Splitter	47690-6C2	1
E Universal Shelf Bracket	49605-AUB	1
F GigaMax® Cat 5e Patch Cord, 1ft, Blue (1 shown)	5G460-03L	4
G Saddle Tie Kit	49605-AST	1
Additional Connectivity		
H 3-Port QuickPort Wallplate	41080-3WP	2
I QuickPort F-Connector Coupler	41084-FWF	2
J HOME 5e® QuickPort Jack	5EHOM-RW5	8

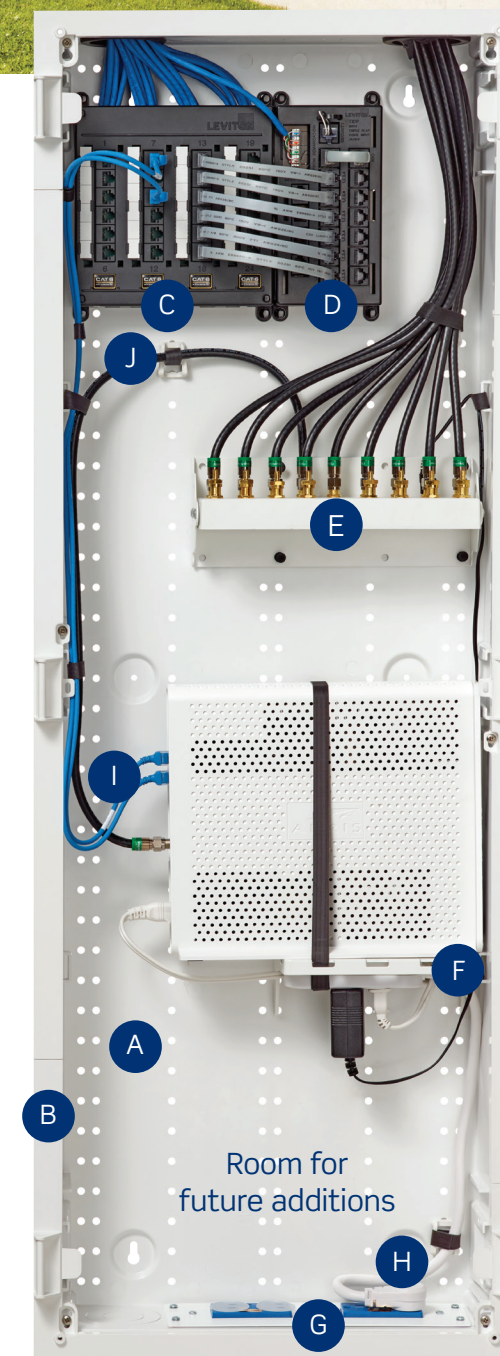


Custom Home Configuration

Enhance the high-end residential living space with full technology packages for home automation, control systems, multi-zone audio, and high-bandwidth networking.

Product Configuration

Description	Part #	Qty
A 42" Wireless Enclosure with Vented Hinged Door	49605-42P	1
B 42" Trim Ring	49605-42T	1
C 24-Port Cat 6 Twist and Mount Panel	476TM-624	1
D Telephone Input Distribution Panel	476TL-T12	1
E 1x16 Premium Amplified Video Splitter	47693-16P	1
F Universal Shelf Bracket	49605-AUB	1
G Two Duplex Surge Receptacle Power Module	47605-ODP	1
H 3-Outlet Power Strip	49605-APS	1
I eXtreme® High-Flex Cat 6 Patch Cord, 3ft, Blue (2 shown)	6H460-03L	8
J Saddle Tie Kit	49605-AST	1
Additional Connectivity		
K 4-Port QuickPort® Wallplate	41080-4WP	8
L QuickPort F-Connector Coupler	41084-FWF	8
M eXtreme® Cat 6 Jack	61110-RW6	16



Today's networks must be fast and reliable, with the flexibility to handle ever-increasing data demands. Leviton can help expand your network possibilities and prepare you for the future. Our end-to-end cabling systems feature robust construction that reduces downtime, and performance that exceeds standards. We offer an unparalleled selection of residential networking, audio, video, and telephone solutions. We even invent new products for customers when the product they need is not available. All of this adds up to the **highest return on infrastructure investment.**

NETWORK SOLUTIONS DIVISION HEADQUARTERS

2222 - 222nd Street S.E., Bothell, WA 98021 USA | leviton.com/ns

Inside Sales (800) 722 2082 insidesales@leviton.com
International Inside Sales +1 (425) 486 2222 intl@leviton.com
Technical Support (800) 824 3005 / +1 (425) 486 2222 appeng@leviton.com

NETWORK SOLUTIONS EUROPEAN HEADQUARTERS

Viewfield Industrial Estate, Glenrothes, Fife KY6 2RS, UK | leviton.com/ns/emea

Customer Service +44 (0) 1592 772124 customerserviceeu@leviton.com
Technical Support +44 (0) 1592 778494 appeng.eu@leviton.com

NETWORK SOLUTIONS MIDDLE EAST HEADQUARTERS

Bay Square, Building 3, Office 205, Business Bay, Dubai - UAE | leviton.com/ns/middleeast

Customer Service +971 (4) 247 9800 lmeinfo@leviton.com

CORPORATE HEADQUARTERS

201 N. Service Road, Melville, NY 11747 USA | leviton.com

Customer Service (800) 323 8920 / +1 (631) 812 6000 customerservice@leviton.com

ADDITIONAL OFFICES

Africa +971 (4) 247 9800 lmeinfo@leviton.com
Asia / Pacific +1 (631) 812 6228 infoasean@leviton.com
Canada +1 (514) 954 1840 pcservice@leviton.com
Caribbean +1 (954) 593 1896 infocaribbean@leviton.com
China +852 2774 9876 infochina@leviton.com
Colombia +57 (1) 743 6045 infocolombia@leviton.com
Latin America & Mexico +52 (55) 5082 1040 lsamarketing@leviton.com
South Korea +82 (2) 3273 9963 infokorea@leviton.com

ALL OTHER INTERNATIONAL INQUIRIES international@leviton.com

